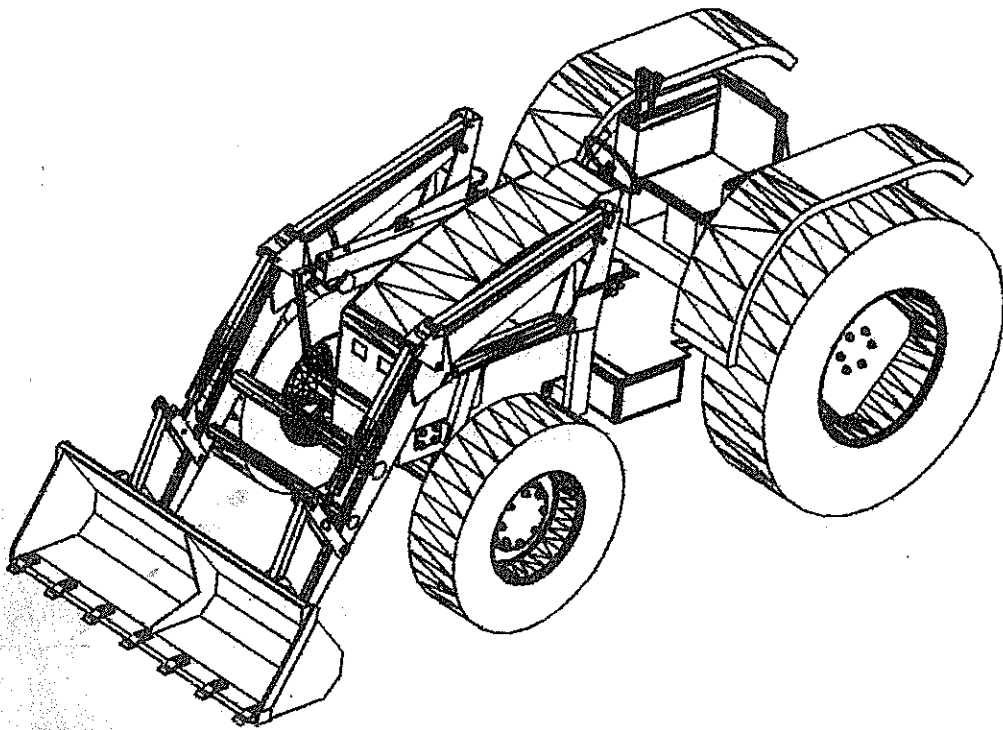


QUICKTACH LOADERS



Operator's & Parts Manual

FREY INDUSTRIES DIVISION
R.R.#1, FAIRLANE RD
LISTOWEL, ONTARIO N4W 3G6
TELEPHONE (519)-291-4156 FAX (519)-291-4270

CONTENTS

- Page 1. Table of Contents
- Page 2. Introductory Letter
- Page 3. Owner Records
- Page 4. Do's & Do Not's
- Page 5. Warranty
- Page 6. Installation Instructions
- Page 12. Operation/Maintenance
- Page 13. Service/Troubleshooting
- Page 14. Loader Illustrations/Parts Guide
- Page 40. Loader Tool Carrier Illustration/Parts Guide
- Page 41. Loader Bucket Indicator Illustration/Parts Guide
- Page 42. Valve Illustrations/Parts Guide
- Page 51. **IMPORTANT** Valve Notice

Dear Customer:

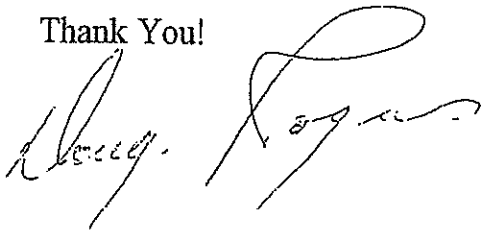
Congratulations in purchasing the finest loader manufactured. Our loader will provide you with many years of service, but as with any product, proper operation and service must be maintained to insure their longevity. This manual contains all the pertinent information needed to operate and maintain our loader.

The Frey lines of loaders are designed to fit compact and agricultural tractors in the 15 to 120 HP range and are specifically designed to be used in agriculture and livestock businesses. The loader has been manufactured to be user friendly as far as operating, mounting and dismounting.

It is very important that you take the time to read and familiarize yourself with this manual. Be sure that you have signed the loader **WARRANTY REGISTRATION** card and your dealer has sent it to our office for registration.

We at Frey sincerely appreciate your business and our commitment is to customer satisfaction. Please contact your dealer or our customer service unit with any questions about our loaders or any of our other products.

Thank You!



Frey Industries

OWNER RECORDS

Model :

Serial No:

Date Purchased:

Dealer :

NOTES

1. Abbreviations: N.A. -- not applicable
 O.L. -- obtain locally
 A.R. -- as required

2. All fasteners are Grade 5 UNC

DO'S

1. Read manual before operation the loader. It is especially important to become familiar with and follow all recommended safety precautions.
 2. Note that Rollover protection is recommended for your tractor before operating your loader.
 3. Follow all mounting and operating instructions carefully.
 4. Move the wheels to widest adjustment and add rear weight to insure maximum stability.
 5. Lower the loader to the lowest position, stop engine, relieve the hydraulic system pressure and set the tractor brakes before leaving the operator's seat.
 6. When the tractor is in motion, please keep the loader in a lower position. This will insure that your vision will not be hampered.
 7. Be sure to slow down when you are making a turn with your tractor to prevent you from accidentally hitting something with your loader arms.
 8. Before disconnecting the hydraulic hoses, release any hydraulic pressure from the system to prevent any serious injury from rapidly escaping oil under pressure.
 9. Adjust you tractor speed when the loader is carrying a load according to the conditions and terrain.
 10. If you are operating the loader with a hydraulic valve, always be sure to use smooth motions when operating the levers to prevent jerking of the loader and always be sure that the levers return to their neutral position.
- Never Assume Anything!!!**

DO NOT'S

1. Do not hesitate to contact your dealer for assistance in mounting and operation of your loader.
2. Do not make drastic movements with the tractor or loader.
3. Do not continue operation if tractor balance is affected.
4. Do not exceed loader specifications.
5. Do not use loader for moving large, shiftable or loose loads that are not properly secured to the attachment to prevent falling off or rolling down the loader boom arms.
6. Do not use the loader for lifting or carrying people around for any reason. The loader was not designed to lift and transport people.
7. Do not stand, walk or work under a raised loader under any condition.
8. Do not use the loader for backgrading. This improper use of the loader puts extreme stress on the latching device which could cause it to fail.
9. Do not run into a mound of material at a rapid speed. This kind of action could cause serious damage to your loader or tractor or it could result in a serious accident.
10. Do not strictly use the lift arms for lifting the load. The tilt cylinders should be used to assist you in lifting your load.
11. **Very Important!!!** Never operate the loader without the safety pins installed on the main loader frame and attachments. Failure to do so could cause the loader or attachments to come unlatched from mounting frame.

Failure to comply with the above "Do's" and "Do Not's" may result in equipment failure and/or personal injury!

WARRANTY

Frey Industries, warrants each item of farm equipment manufactured by Frey, to be free from defects from material and workmanship under reasonable use and service. The obligation of the Company under this warranty is limited to the repairing, the replacing or the refunding of the purchase price, less reasonable depreciation, as the Company may elect, for part or parts which shall be returned to a Distributor or Dealer of the Company with transportation charges prepaid by the purchaser, and as to which examination shall disclose to the Company's satisfaction to have been defective in material or workmanship, provided that such part or parts shall be reported to the Dealer or Distributor as being defective not later than twelve months from the date of the first use by the original purchaser. This warranty does not obligate Frey Industries to bear the cost of labour in replacement of such defective parts.

This warranty shall not apply to equipment which has been altered, improperly maintained, or repaired so as in the Company's judgement, to have adversely affected its performance. The Company makes no warranty of any character with respect to electric motors, belts, hydraulic hoses, valves, cylinders, or other items not manufactured by the Company.

The Company's warranty and its obligation hereunder is in lieu of all other warranties, including without limitation, IMPLIED WARRANTIES OF MERCHANTABILITY AND FITNESS FOR A PARTICULAR PURPOSE and all other representations to the Distributor, Dealer and original purchaser, that extend beyond the description of the equipment. The Company shall not be liable for incidental and consequential damages or either of them of any nature whether based on tort or contract. No person is authorized to give warranties or to assume any liabilities unless made in writing by an authorized representative of Frey Industries.

COMPLETE AND RETURN WARRANTY CARDS

INSTALLATION INSTRUCTIONS

Models 40, 60, 75, 795 & 85 Loaders

- Operation #1 -- Mounting Sideframes
- Operation #2 -- Loader Preparation
- Operation #3 -- Mounting Loader for Models 40, 60, 75, 795 & 85.
- Operation #4 -- Mounting Attachments

Operation #1 -- Mounting Sideframes

STEPS --

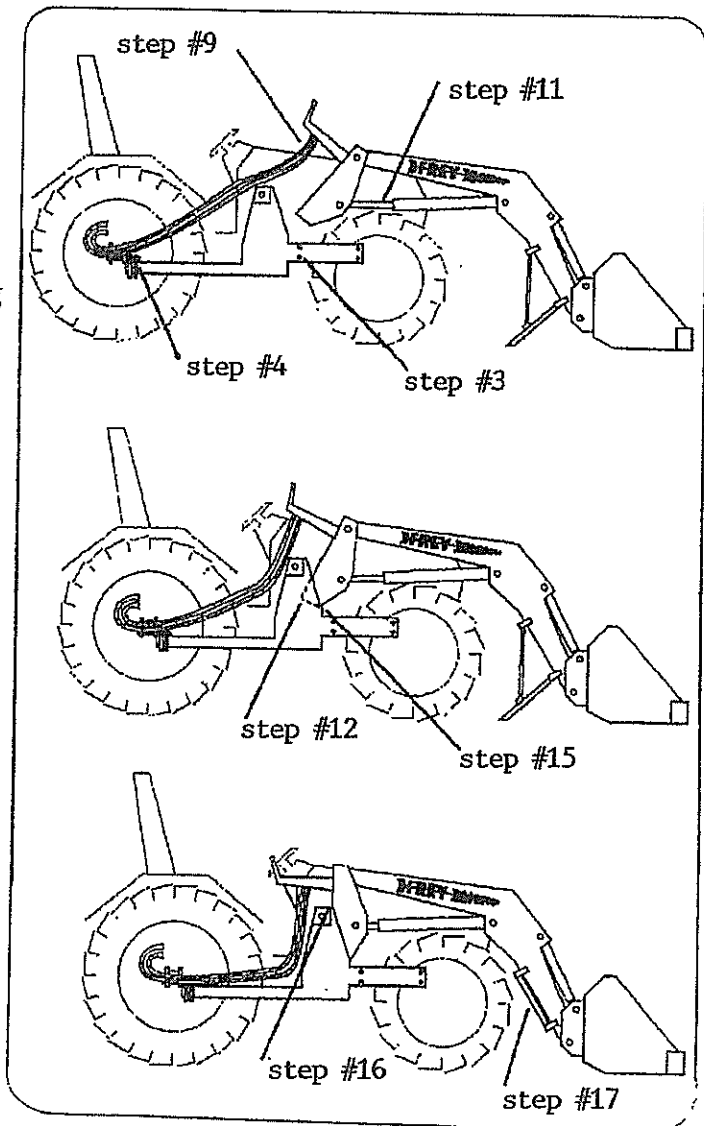
1. Take L.H. sideframes to L.H. side of tractor.
2. Using hoist, raise sideframe up to side of tractor aligning bolt holes in tractor to frame.
3. Take appropriate bolts and start threading them into tractor (do not tighten).
4. If axle brackets are required, at this point assemble but do not tighten bolts.
5. After all bolts have been started, return and tighten all bolts securely.

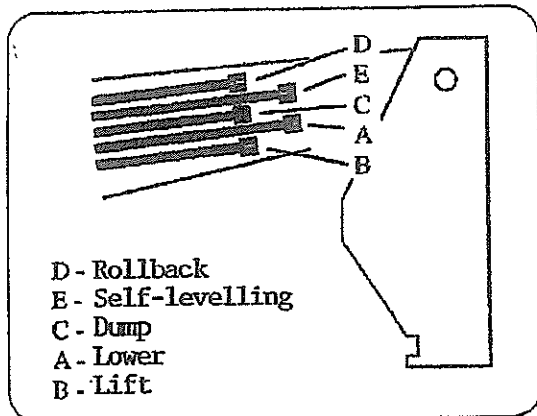
-- Repeat process for R.H. side

Operation #2 -- Loader Preparation

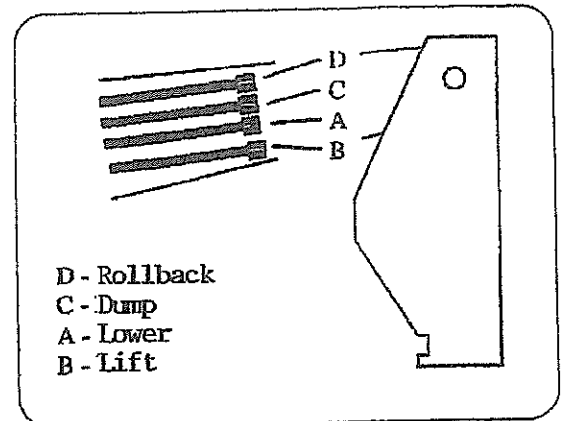
6. Mount valve on R.H. loader post.
7. With hoses supplied in bag kit, assemble them from valve to loader as shown in figures #2 and #3. (Page 7)
8. If loader is self-levelling there will be an extra hose -- as shown in figure #2. (Page 7)
9. Dealer should cut to length 1/2" hose the approximate length of hose from valve to tractor making sure hose is long enough to reach valve when loader is removed.
10. Hook pressure hose to in-port on valve. Hook suction hose to out-port on valve.

Figures 1





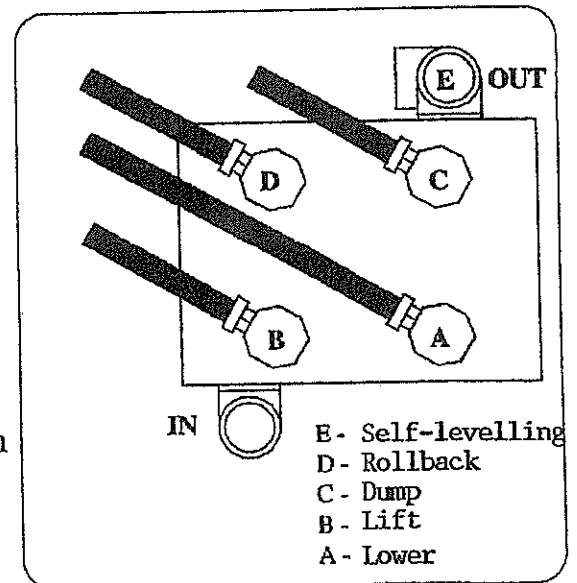
Figures 2: STEP #8



Figures 3: STEP #7

**Operation #3 -- Mounting Loader for Models
40, 60, 75, 795 & 85.**

11. Stand loader in upright position with cylinders fully extended as shown in figure #1. (Page 6)
12. Drive tractor into loader until loader posts touch inside of sideframe sockets on tractor.
13. Hook up pressure and return hoses to tractor.
14. Rev tractor for approximately 30 seconds to fill loader cylinder full of hydraulic oil.
15. Reach ahead and grab valve handles, lower loader post into sideframe sockets until posts are secured under pin of sideframe as shown in figure #1. (Page 6)
16. Take large wedges supplied in bag kit and drop through lock brackets of frames using hair pins to secure pins.
17. Raise stands on loader into travelling position.
18. Loader is secured -- ready to operate.



Figures 4: STEP #10

The parts on the valve Fig.4 connect to the corresponding lines on the loader. Fig. 2 & 3.

For example, port A on the valve connects to line A on the loader.

INSTALLATION INSTRUCTION

FR360, FR500 & FR750 Loaders

Each tractor model requires different mounting kits and most kits attach to the rear axle for added strength. The mounting consists of attaching the left and right sections of the mounting frame to your tractor. We highly recommend, because of tight tolerances, that you leave all the mounting bolts loose until you install the loader on the mounting frame. After the loader has been installed, tighten all bolts on the mounting frame.

Step 1:

Be sure the loader is positioned on level ground (See Fig. A). Drive the tractor into position close enough so that the quick connect couplings on the loader hoses can be attached to the couplers at the hydraulic manifold on the tractors mounting frame.

Step 2:

To install the loader to the mounting frame, turn the bucket or other loader attachment downward so that it pushes into the ground as seen in figure A or figure B. The most important thing is that one of these methods be used so that the tractor doesn't push the loader forward.

(PLEASE NOTE) If you roll the bucket all the way under (refer to figure C) and try to dismount or mount the loader you are in danger of bending the self levelling arms on the loader. If this is done, Frey Industries cannot honour a warranty claim to replace the self levelling arms!

THE CORRECT LOADING
POSITIONS ARE AS SHOWN:

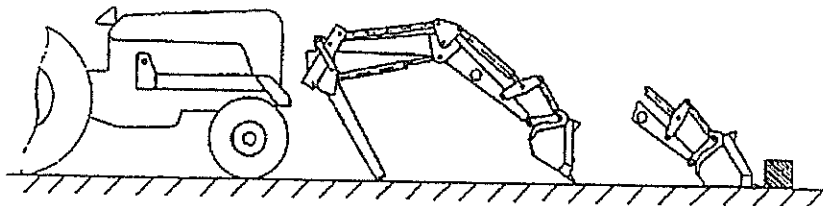


Figure - A

Figure - B

INCORRECT AND DANGEROUS
DISMOUNT POSITIONS AS FOLLOWS:

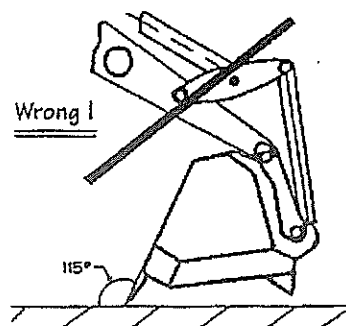


Figure - C

Step 3:

After connecting the hoses, activate your tractor remotes or hydraulic valve on the lift cylinders until the rear part of the loader is lifted into the air far enough to clear the mounting frame (please refer to Figure D).

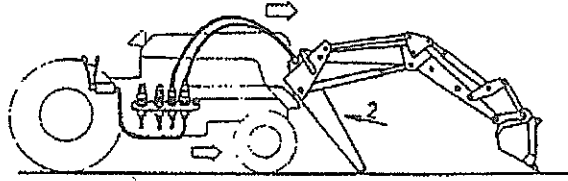


Figure - D

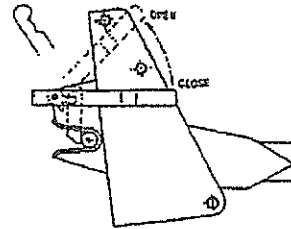


Figure - E

Step 4:

Be sure you have opened the main latching lever to the open position (please refer to Figure E). The tractor should be driven slowly forward until the wrap around loader frame touches the mounting frame support arms. Slowly begin to slide towards the round latch at the back of the loader mounting frame (Refer to Figure F). The loader will slide onto the mounting frame support arms until the hook on the loader (refer to Figure G) engages the loader mounting frame rear carrier pins.

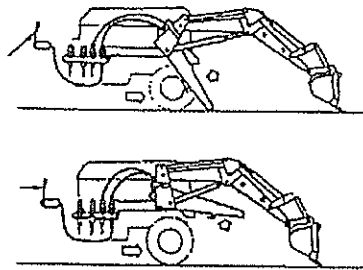


Figure - F

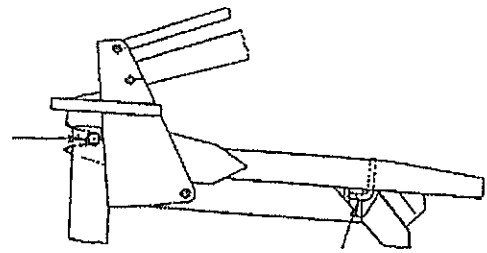


Figure - G

Step 5:

Once the loader has slid back as far as it can, lower the main latching lever (refer to Figure E) to secure the loader. Do not forget to install the safety pins to prevent the lever from unlatching.

1 Step 6:

After the loader has been installed, tighten all bolts in the mounting frame and connect the remaining hydraulic lines to the quick release manifold (See Figure H).

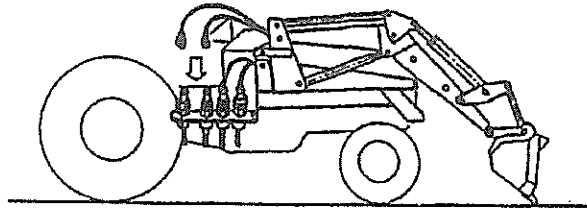


Figure - H

You have now completed the quickest loader mount in the industry. With practice you should be able to mount the loader in 5-8 minutes.

2 DISMOUNTING

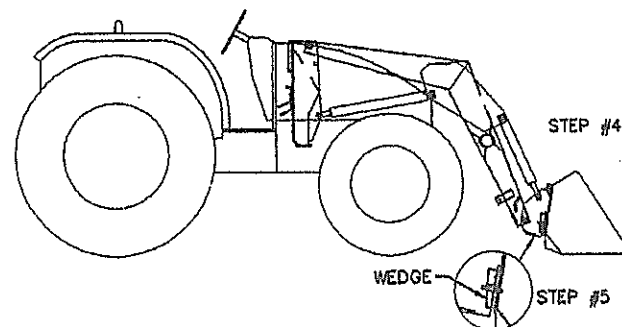
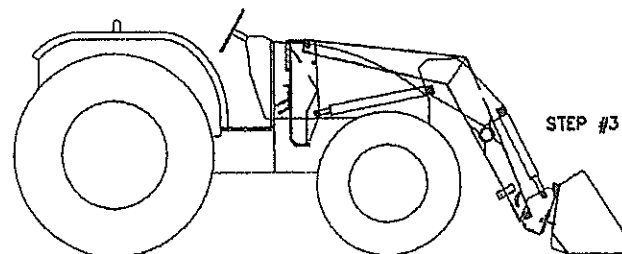
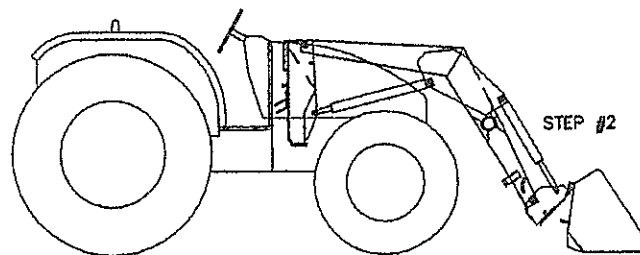
Dismounting the loader is just as simple and quick as mounting it. The most important thing to remember is that you need to be on level ground before attempting the dismount and be sure that you have the bucket in the proper position (See figure A or B) and simply reverse the mounting procedure to dismount. Extreme Caution should be taken not to damage your hoses and hydraulic lines when mounting and dismounting the loader. When the loader is in its' highest position, the stability of your tractor is greatly reduced, so please use Extreme Caution!

CAUTION - Before operating the loader please proceed to Loader Operation on Page 12.

MOUNTING ATTACHMENTS

STEPS

1. Drive up to bucket making sure the bucket and backplate on loader are square to each other.
2. Tilt backplate on loader ahead as shown and at same time drive into bucket.
3. When backplate touches bucket raise loader until backplate catches angle on bucket.
4. Tilt backplate backwards until bucket is on.
5. Take wedges and drop through slots on bucket to lock on backplate.
6. Install hitch pins so wedges can not fall out.
7. To remove bucket reverse process.



Loader Operation/Maintenance

1. Once the hydraulics have been hooked up, you must bleed the air from the hydraulic system before operation. Leaving air in the system could be very dangerous because it greatly affects the performance of the loader. Loosen the hyd. fittings on the lower cylinders and activate the tractor remote or auxiliary valve until clean, uncontaminated oil flows out. The loader will go up and down smoothly without jerking and there should be no unusual noises coming from the hydraulic system. Always be sure that all connections have been properly tightened.
2. After completion of Item 1 above, recheck all mounting frame bolts for proper torque. Initial operation can cause loosening of the fasteners. Please double check again after the first hour of operation and again after 10 hours of operation.
3. Our loader can be used in many different functions and will perform up to expectations, however, the loader **has not** been designed to be used in any type of digging and we highly recommend you refrain from this activity. **The loader warranty does not cover damage that occurs as a result of misuse.**
4. There are two primary positions for the loader; the neutral position and the working position.

When the loader is in the neutral position, there is no hydraulic oil movement in any of the loader's cylinders. If you are using the tractor remotes, the loader will remain in neutral until you open the remote by moving the remote lever on the tractor. If you are using an additional hydraulic valve the oil will pass through the valve and back to the tank until the lever on the valve is actuated and then the oil will travel to the lift or bucket cylinders. The loader is in the working position when you open the tractor remote or auxiliary valve by pushing or pulling the lever. This allows the oil to travel to the cylinders that activates their movement in either lifting or tilting function.
5. The hydraulics can be hooked up to your tractor in many different ways. This is usually decided at the dealership where you purchased the loader. We recommend that you familiarize yourself on how your dealer hooked up your hydraulics. This can help us in the future if you are needing to check your system for hydraulic leaks or any other unseen problem. If you have purchased an auxiliary valve to operate your loader, be sure that you allow the hydraulic oil to warm up before operating the loader. If the hydraulic fluid has not warmed up, its viscosity will be too low; it will not move properly and could damage the hydraulic lines. After the hydraulic oil has reached its operating temperature, always limit the number of times you open and close your valve. By repeatedly opening and closing the valve you could experience overheating of your tractor hydraulic system.

SERVICE

1. Check your tractor's hydraulic oil often and check the hydraulic fittings for any looseness that may occur after prolonged use.
2. If the control valve is making noise, it will need to be adjusted.
3. All grease points should be greased regularly especially if you use the loader often.
4. Please change the oil in the loader every 500 hours if it's being used in heavy work conditions, 800 hours if in normal working conditions and 1100 hours if being used in light applications.
5. If your loader is needing major service we highly recommend that you take it to your closest Frey dealer for repairs.
6. Frey will only honor warranties performed by qualified technicians approved by our company.
7. Replacement parts can be obtained at your nearest authorized Frey dealer.
8. **(VERY IMPORTANT)** When ordering parts it is essential that you give the model of your loader, serial number, date of purchase, what kind of tractor it is mounted on and the part number required. (Refer to the parts catalog at the back of the manual to find the part number you need.)
9. **NEVER** use any attachments that are not specifically designed for our loader. Doing so will void your warranty.

TROUBLESHOOTING

PROBLEM	REASON	SOLUTION
Oil leaking	Loose hyd. fittings Loose fittings Damaged gaskets Damaged pipelines Damaged couplers	Tighten hyd. fittings Tighten fittings Repair gaskets Repair pipes Repair couplers
Loader jerks and makes noise	Not enough oil in system Vibration in pressure lines Air in loader system Dirty oil Water in the oil	Add oil Secure the lines Bleed the air out Change oil Change oil
Movement of the loader lift cylinder is uncontrolled	Air in cylinder Damaged seals Deformed seals Pressure isolation	Bleed the hydraulic system Change seals Change cylinder Control & change isolation

LOADER

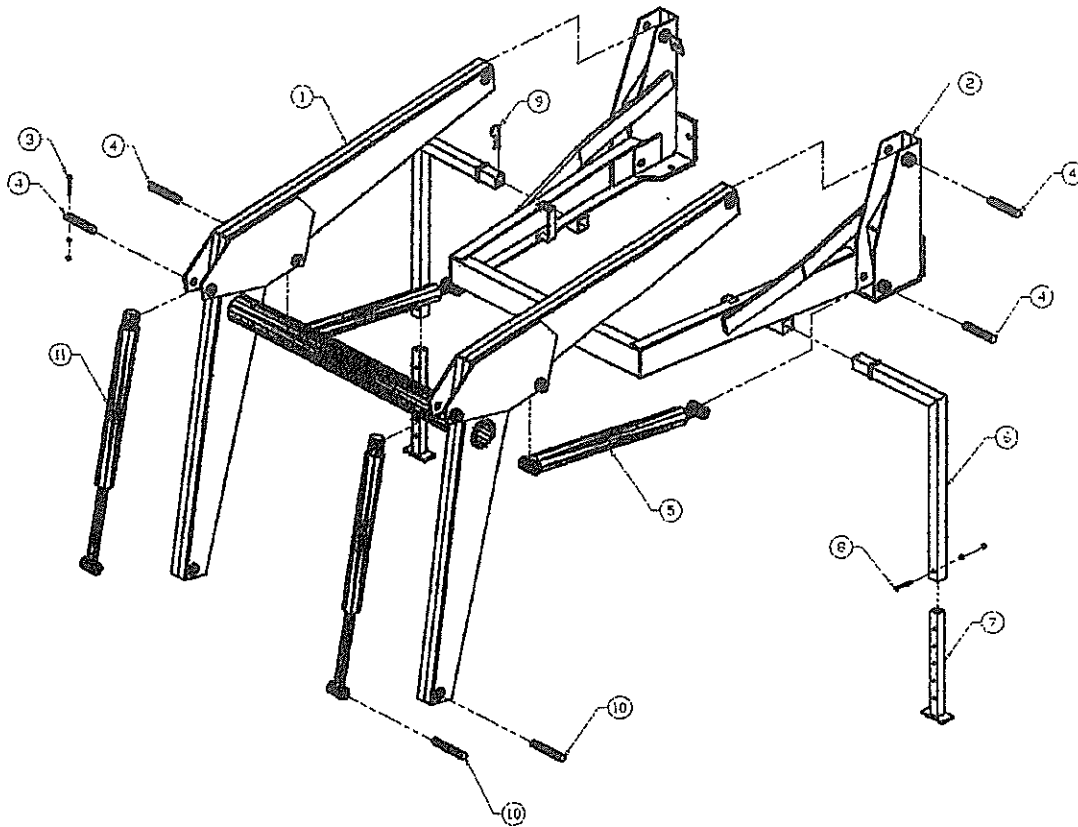
ILLUSTRATIONS

&

PARTS

GUIDE

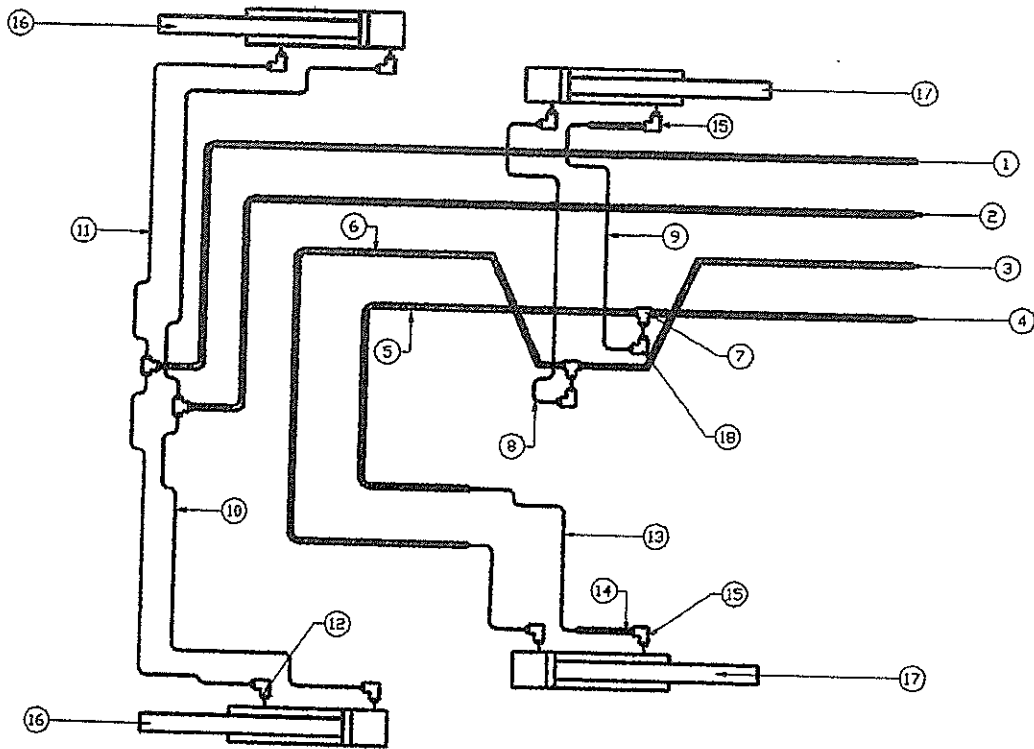
Model 2010 LOADER ASSEMBLY



No.	Description	Part No.	Qty
1	Loader Main Boom	21598	1
2	Loader Yoke Assembly	21610	1
3	Hex Bolt-1/4x2,L.W.&Nuts	O.L.	12
4	Hinge Pin-3/4x4	21590	8
5	Lift Cylinder	P87-009	2
6	Loader Stand	21647	2

No.	Description	Part No.	Qty
7	Leg Extension	21620	2
8	Hex Bolt-5/16x1 1/2 &	O.L.	2
9	Hairpin-5/32	O.L.	2
10	Hinge Pin-3/4x4 1/4	21591	4
11	Bucket Cylinder	P89-033	2

Model 2010 HYDRAULIC SYSTEM

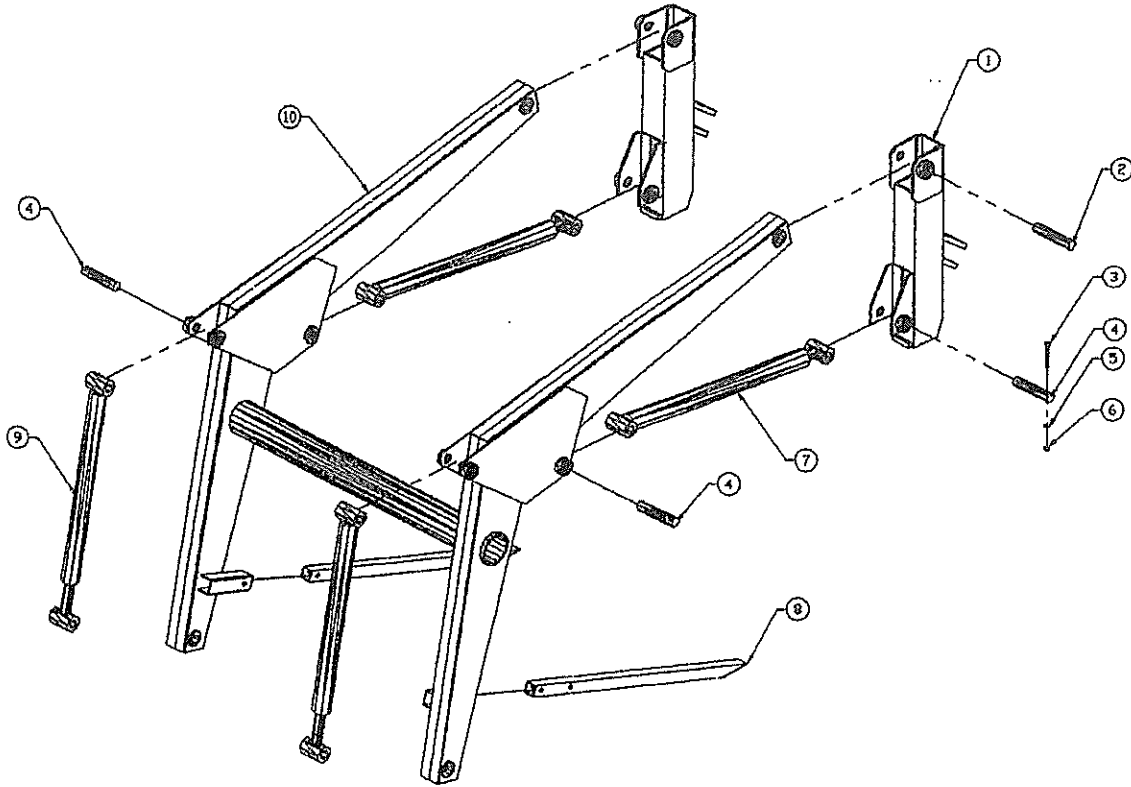


No.	Description	Part No.	Qty
1	3/8" Hyd. Tubing - 1st Line	21516	1
2	3/8" Hyd. Tubing - 2nd Line	21517	1
3	3/8" Hyd. Tubing - 3rd Line	21519	1
4	3/8" Hyd. Tubing - 4th Line	21518	1
5	3/8" Hyd. Tubing - 4th Line	21520	1
6	3/8" Hyd. Tubing - 3rd Line	21521	1
7	Hyd. Tee Fitting	5705x6	4
8	1/4" Hyd.Hose - 11" Long	21629	1
9	1/4" Hyd.Hose - 13" Long	21628	2

No.	Description	Part No.	Qty
10	1/4" Hyd.Hose - 18" Long	21393	2
11	1/4" Hyd.Hose - 28" Long	21392	2
12	90 Deg. St. Elbow	3409x6	2
13	1/4" Hyd.Hose - 14" Long	21627	1
14	3/8" Hyd. Tubing -Cyl.	21522	2
15	90 Deg. Hyd. Elbow	5405x6	2
16	Bucket Cylinder	P89-033	2
17	Lift Cylinder	P87-009	2
18	90 Deg. Hyd. Elbow	5506x6	2

NOTE: Hydraulic Hoses from Valve to loader, supplied with hydraulic valve.

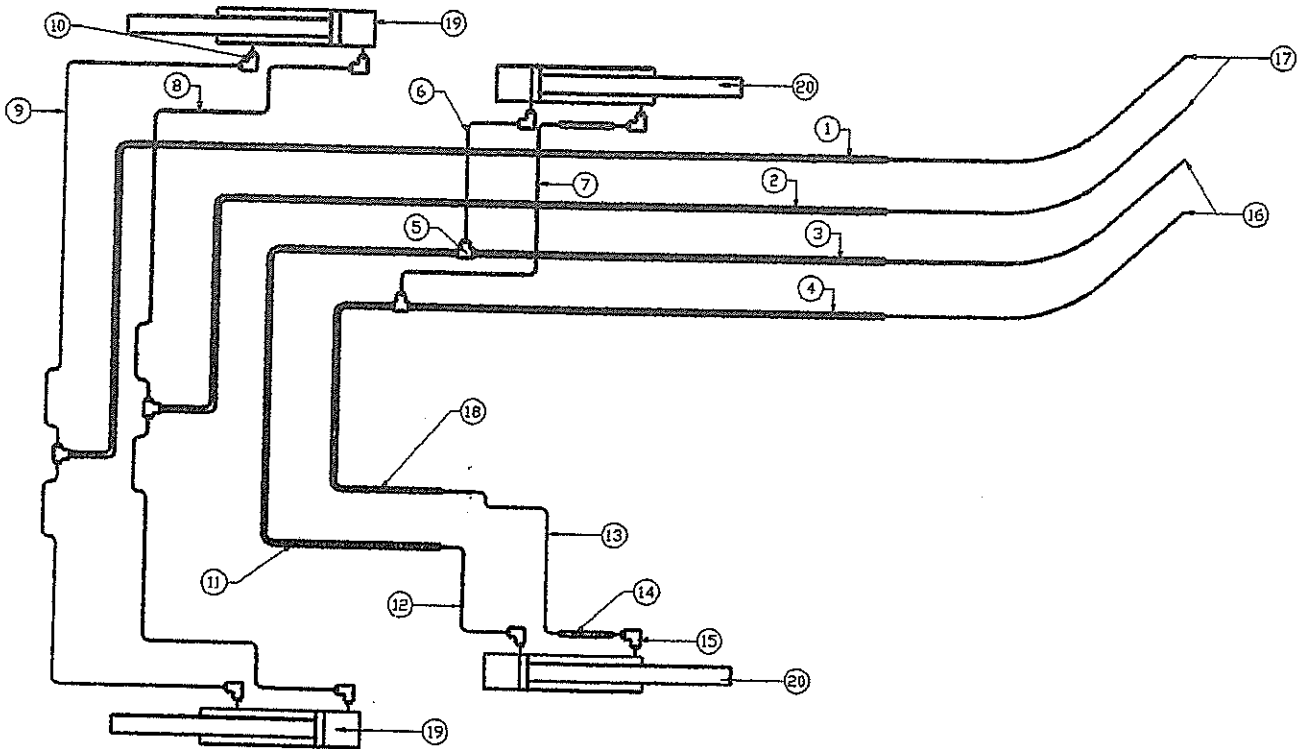
Model 40S & 40L LOADER ASSEMBLY



No.	Description	Part No.	Qty
1	Post	21290	2
2	Hinge Pin 1" Dia.x5 Lg.	21035	2
3	5/16x2 1/2 Hex Bolt	O.L.	8
4	Pivot Pin 1" Dia.x4 3/4 Lg.	21117	6
5	5/16 Lockwasher	O.L.	8
6	5/16 Hex Nut	O.L.	8

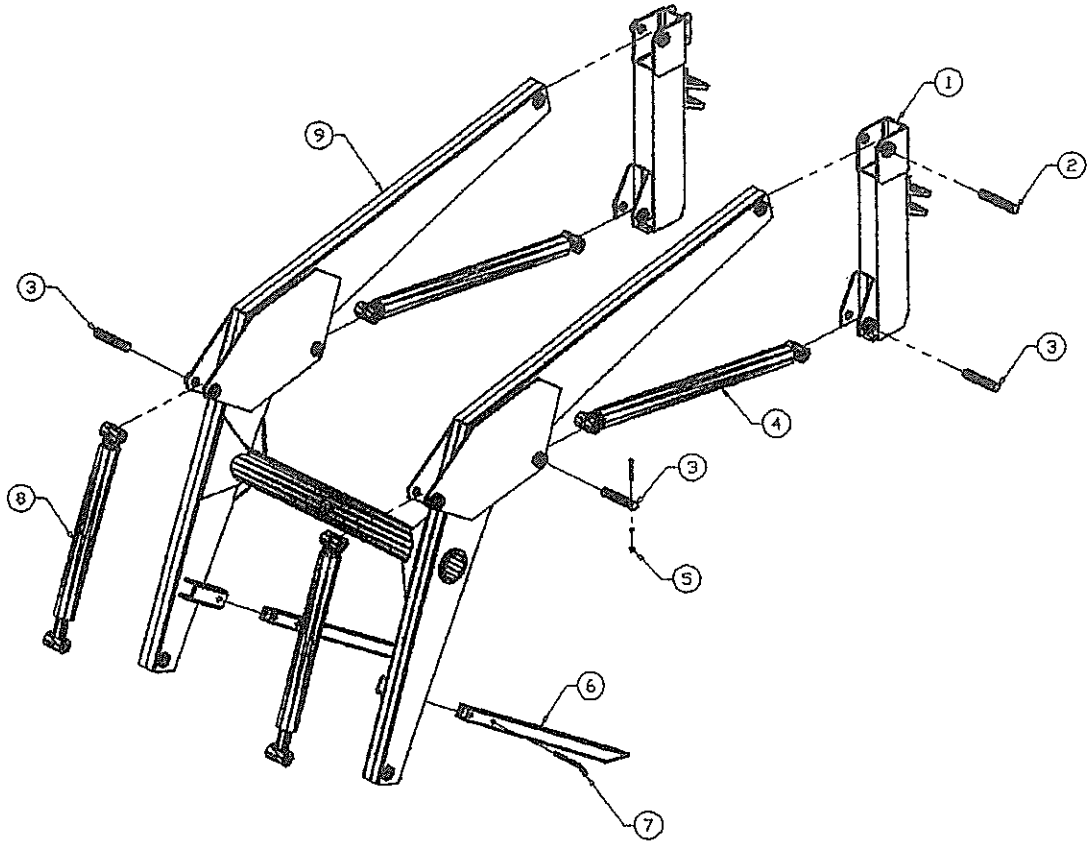
No.	Description	Part No.	Qty
7	Lift Cylinder (4010L)	P85-007	2
	Lift Cylinder (4010S)	P85-008	2
8	Leg Stands	21492	2
9	Bucket Cylinder	P85-009	2
10	Boom (4010L)	21326	1
	Boom (4010S)	21995	1

Model 40S & 40L HYDRAULIC ASSEMBLY



Hydraulic System Model 40S - Parts List				Hydraulic System Model 40L - Parts List			
No.	Description	Part No.	Qty	No.	Description	Part No.	Qty
1	3/8 Hyd. Tube - 59 1/2" Long	21334-S	1	1	3/8" Hyd. Tube - 64 1/2" Long	21334-L	1
2	3/8 Hyd. Tube - 59" Long	21330-S	1	2	3/8" Hyd. Tube - 63 1/2" Long	21330-L	1
3	3/8 Hyd. Tube - 36" Long	21331-S	1	3	3/8" Hyd. Tube - 41" Long	21331-L	1
4	3/8 Hyd. Tube - 35" Long	21335-S	1	4	3/8" Hyd. Tube - 42" Long	21335-L	1
5	Hyd. Tee Fitting	C5705x6	4	5	Hyd. Tee Fitting	C5705x6	4
6	1/4 Hyd. Hose - 19" Long	21389	1	6	1/4 Hyd. Hose - 19" Long	21389	1
7	1/4 Hyd. Hose - 19" Long	21391	1	7	1/4 Hyd. Hose - 19" Long	21391	1
8	1/4 Hyd. Hose - 18" Long	21393	2	8	1/4 Hyd. Hose - 18" Long	21393	2
9	1/4 Hyd. Hose - 28" Long	21392	2	9	1/4 Hyd. Hose - 28" Long	21392	2
10	3/8 x 90 Deg. Str. Elbow	C3409x6	2	10	3/8 x 90 Deg. Str. Elbow	C3409x6	2
11	3/8 Hyd. Tube - 38" Long	21333	1	11	3/8 Hyd. Tube - 38" Long	21333	1
12	1/4 Hyd. Hose - 19" Long	21391	1	12	1/4 Hyd. Hose - 19" Long	21391	1
13	1/4 Hyd. Hose - 19" Long	21390	1	13	1/4 Hyd. Hose - 19" Long	21390	1
14	1/4 Hyd. Hose - 18" Long	21332	2	14	1/4 Hyd. Hose - 18" Long	21332	2
15	90 Deg. Hyd. Elbow	C5405x6	4	15	90 Deg. Hyd. Elbow	C5405x6	4
16	3/8 Hyd. Tube - 26" Long	21395	2	16	3/8 Hyd. Tube - 26" Long	21395	2
17	3/8 Hyd. Tube - 23" Long	21394	2	17	3/8 Hyd. Tube - 23" Long	21394	2
18	3/8 Hyd. Tube - 39 1/2" Long	21336	1	18	3/8 Hyd. Tube - 39 1/2" Long	21336	1
19	Bucket Cylinder	P85-009	2	19	Bucket Cylinder	P85-009	2
20	Lift Cylinder	P85-007	2	20	Lift Cylinder	P85-007	2

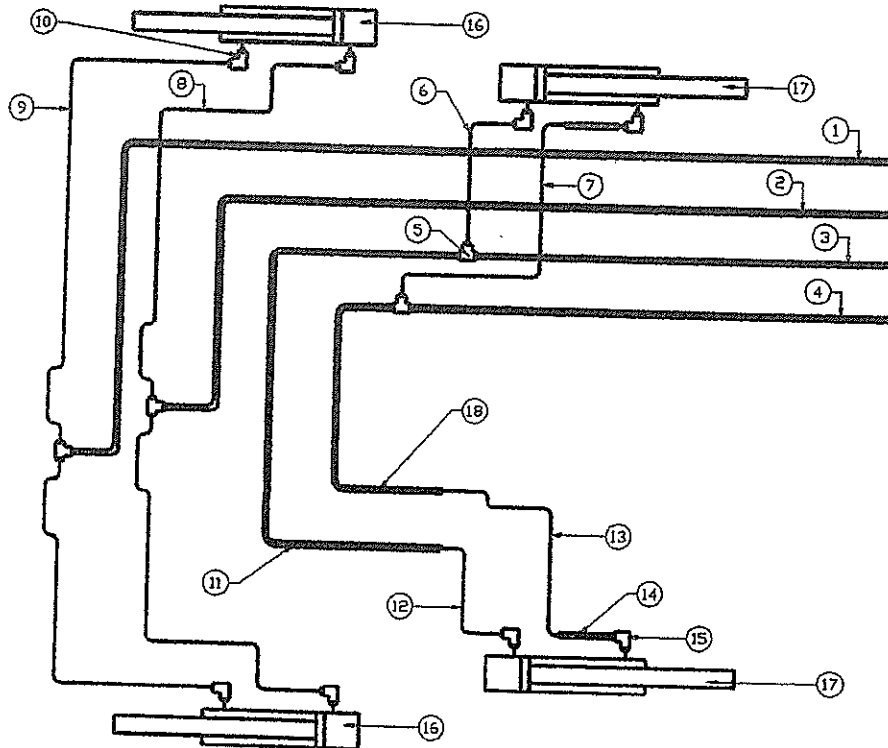
6010 LOADER ASSEMBLY



No.	Description	Part No.	Qty
1	Post	21003	2
2	Hinge Pin - 5 1/2"	21036	2
3	Hinge Pin - 5"	21035	6
4	Lift Cylinder - 2"	P88-019	2
5	Hex Bolt - 5/16 x 2 1/2, LW, & HN		8

No.	Description	Part No.	Qty
6	Loader Leg	21850	2
7	Parking Lock Pin	21447	2
8	Bucket Cylinder - 2"	P87-015	2
9	Boom	21002	1
	Seal Kit - 2"	P87-015S	

6010 HYDRAULIC SYSTEM



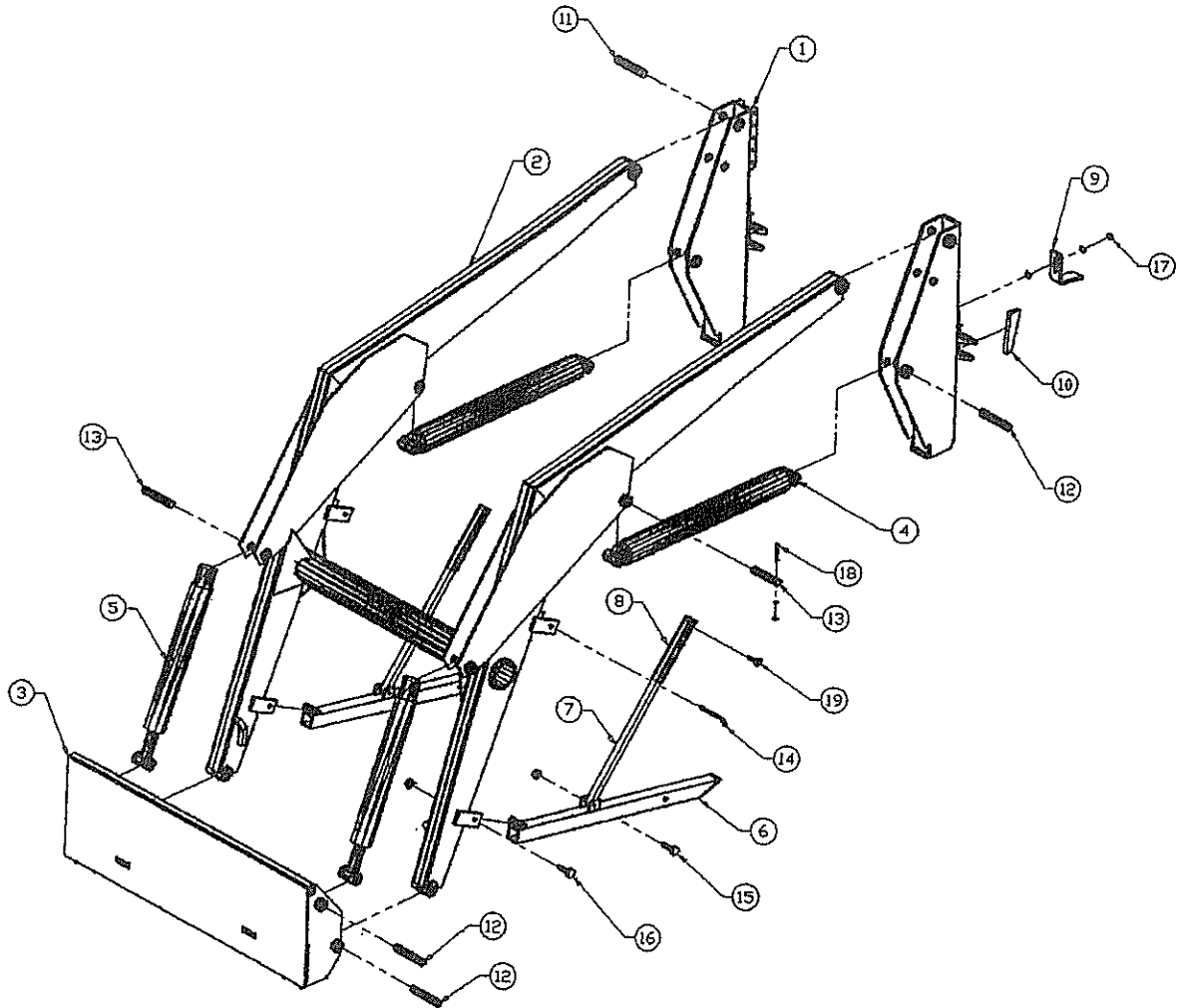
No.	Description	Part No.	Qty
1	Hydraulic Tubing	21040B	1
2	Hydraulic Tubing	21040C	1
3	Hydraulic Tubing	21040E	1
4	Hydraulic Tubing	21040D	1
5	Tee Fitting	5705x8	4
6	Hyd. Hose 11 3/4 Length	21046	1
7	Hyd. Hose 16 1/2 Length	21044	1
8	Hyd. Hose 29 Length	21043	2
9	Hyd. Hose 17 3/4 Length	21047	2

No.	Description	Part No.	Qty
10	90 Deg. Elbow Fitting	5405x8	4
11	Hydraulic Tubing	21040A	2
12	Hyd. Hose 11 3/4 Length	21045	1
13	Hyd. Hose 16 1/2 Length	21049	1
14	Hydraulic Tubing	21041	2
15	90 Deg. Elbow 3/8	3409x6	2
16	Bucket Cylinder	P87-015	2
17	Lift Cylinder	P88-019	2

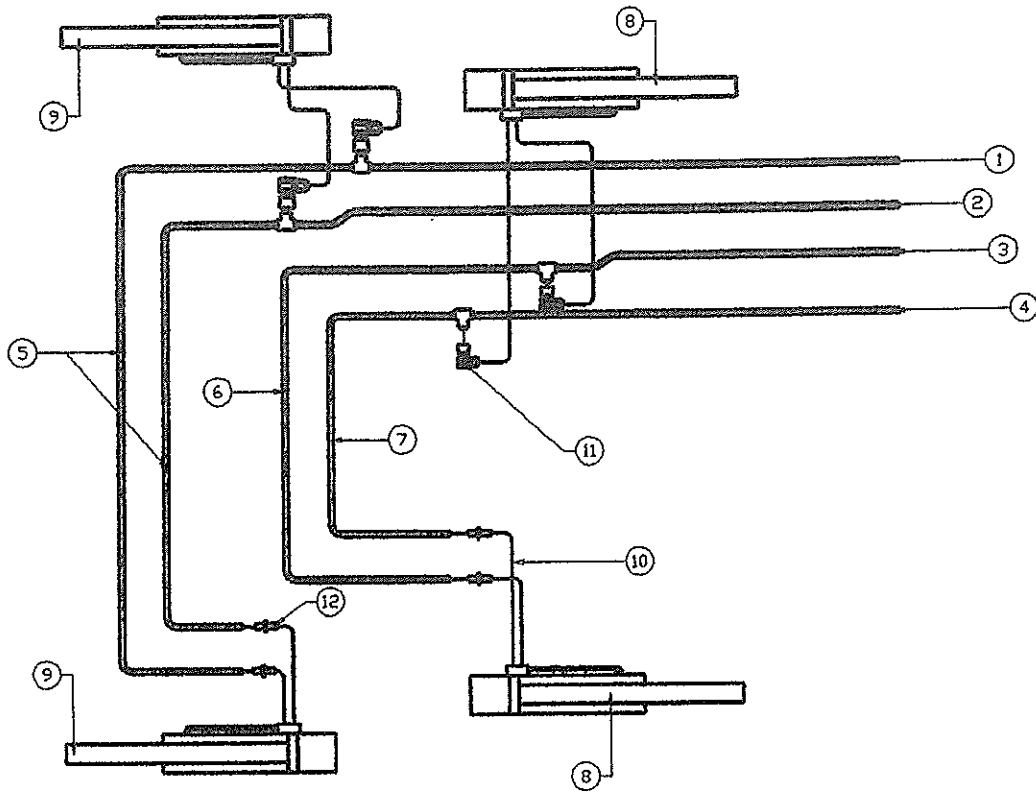
7510/8510

Item No.	Description	Part No.	Qty	Part No.	Qty
		7510	7510	8510	8510
1	Post	21358	2	21296	2
2	Boom	21497	1	21499	1
3	Quicktach Plate	21162	1	21162	1
4	Lift Cylinder - 3" (standard)	P88-001	2	P86-021	2
	- 2 1/2" (optional)	P85-001	2	P88-001	2
	- 2 1/4" (optional)	P86-021	2	P85-001	2
5	Bucket Cylinder - 2 1/2" (standard)	P82-022	2	P82-022	2
	- 2 1/4" (optional)	P85-010	2	P85-010	2
6	Lower Leg	21445	2	21298	2
7	Upper Leg			21310	2
8	Leg Extension			22090	2
9	Lock Bracket	21313	2	21313	2
10	Wedge	21423	2	21423	2
11	Hinge Pin - 5 1/2	21121	2	21121	2
12	Hinge Pin - 5 1/2	21036	6	21036	6
13	Hinge Pin - 5	21035	4	21035	4
14	Clevis Pin	21447	2	21447	2
15	Hex Bolt & nut - 1/2 x 2 1/2				2
16	Hex Bolt & nut - 1/2 x 4 1/2				2
17	Locknut & 2 Flatwashers - 1/2		2		2
18	Hex Bolt, LW, & nut - 5/16 x 2 1/2		12		12
19	Pin			22091	2
---	Seal Kit - all 2 1/4" Cylinders			P85-001S	
----	- all 2 1/2" Cylinders			P82-022S	
----	- all 3" Cylinders			P85-027S	

LOADER ASSEMBLY



7510 HYDRAULIC SYSTEM

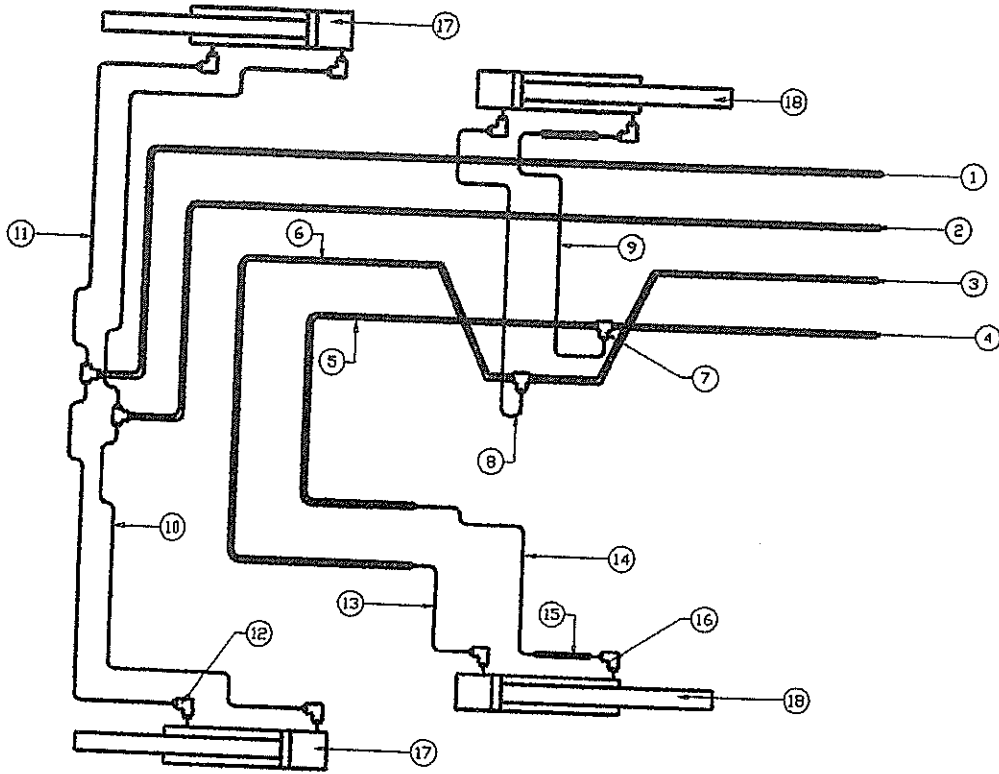


No.	Description	Part No.	Qty
1	1/2" Hydraulic Tubing	22115	1
2	1/2" Hydraulic Tubing	22116	1
3	1/2" Hydraulic Tubing	21368	1
4	1/2" Hydraulic Tubing	21369	1
5	1/2" Hydraulic Tubing	22114	2
6	1/2" Hydraulic Tubing	21367	1
7	1/2" Hydraulic Tubing	21365	1
8	Lift Cylinder	P00-021	2
9	Bucket Cylinder	P00-015	2
10	3/8" Hydraulic Hose 20" Long	22452	8
11	90 Deg. Hyd. Elbow	5505x8	4
12	Hyd. Male Union	5506x8	4

NOTE:

Hydraulic Hoses from Valve to loader, supplied with hydraulic valve.

8510 HYDRAULIC SYSTEM



NAOS 5918 23200 - PACKAGE

No.	Description	Part No.	Qty
1	1/2" Hyd. Tubing - 1st Line	21377	1
2	1/2" Hyd. Tubing - 2nd Line	21378	1
3	1/2" Hyd. Tubing - 3rd Line	21371	1
4	1/2" Hyd. Tubing - 4th Line	21370	1
5	1/2" Hyd. Tubing - 4th Line	21396	1
6	1/2" Hyd. Tubing - 3rd Line	21397	1
7	Hyd. Tee Fitting	5705x8	4
8	3/8" Hyd. Hose - 20" Long	21418	1
9	3/8" Hyd. Hose - 15" Long	21419	1

No.	Description	Part No.	Qty
10	3/8" Hyd. Hose - 20" Long	21409	2
11	3/8" Hyd. Hose - 35" Long	21401	2
12	90 Deg. Str. Elbow	3409x6	2
13	3/8" Hyd. Hose - 18" Long	21404	2
14	3/8" Hyd. Hose - 22" Long	21417	1
15	1/2" Hyd. Tubing	21041	2
16	90 Deg. Hyd. Elbow	5405x8	4
17	Bucket Cylinder	P82-022	2
18	Lift Cylinder	P86-021	2

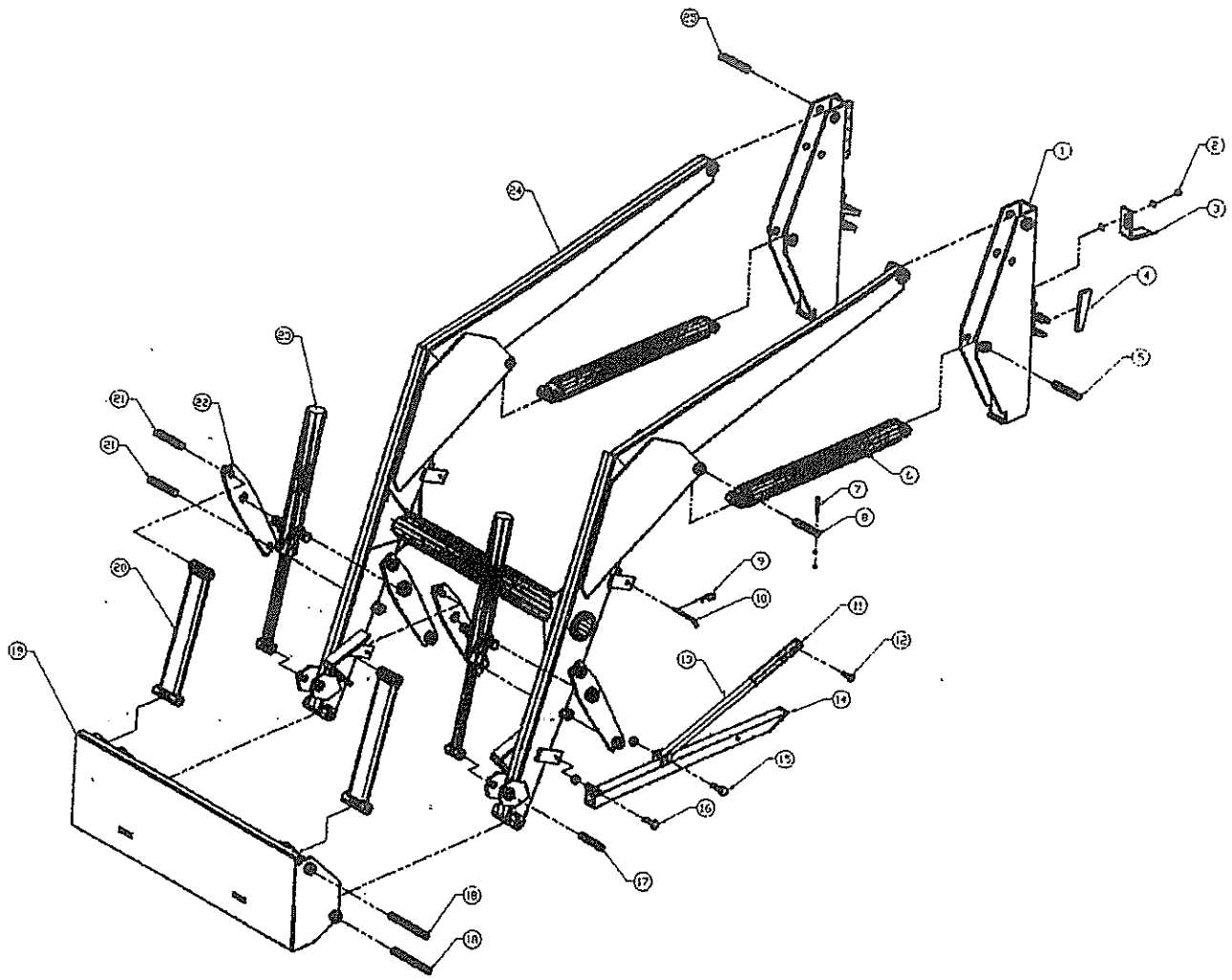
NOTE:

Hydraulic Hoses from Valve to loader, supplied with hydraulic valve.

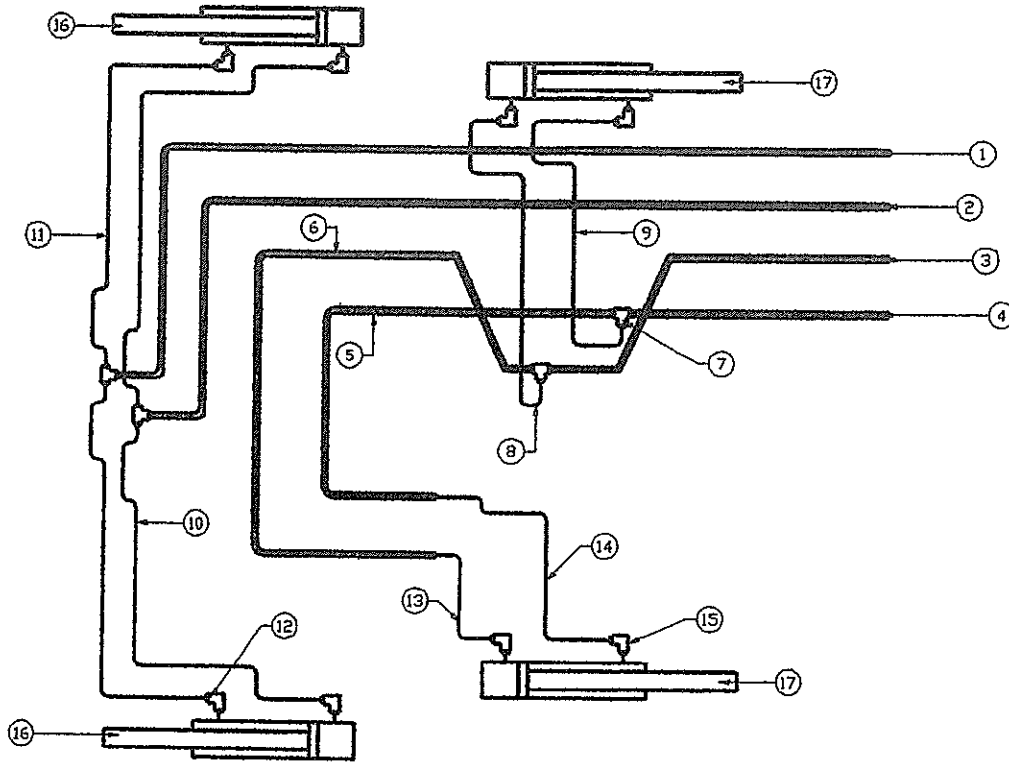
7520/8520

Item No.	Description	Part No. 7520	Qty 7520	Part No. 8520	Qty 8520
1	Post				
2	Lock Nut 1/2" + 2 FW	21358	2	21296	2
3	Lock Bracket		2		2
4	Wedge	21313	2	21313	2
5	Hinge Pin - 5 1/2"	21423	2	21423	2
6	Lift Cylinder - 2 1/2" (Standard)	21036	2	21036	2
	- 2 1/4" (Optional)	P84-009	2	P84-009	2
	- 3" (Optional)	P85-001	2	P85-001	2
7	Hex Bolt - 5/16 x 2 1/2, LW & Nut	P84-017	2	P84-017	2
8	Hinge Pin - 5"		20		16
9	Hair Pin - 3/16	21035	2	21035	2
10	Clevis Pin				2
11	Leg Extension	21447	2	21447	2
12	Pin			22090	2
13	Upper Leg			22091	2
14	Lower Leg			21310	2
15	Hex Bolt - 1/2 x 2 1/2 & Nut	21445	2	21298	2
16	Hex Bolt - 1/2 x 4 1/2 & Nut				2
17	Hinge Pin - 4 3/4"				2
18	Hinge Pin - 7 3/4"	21117	2	21117	2
19	Quicktach Plate	21112	4	21112	4
20	Connecting Arm	21496	1	21496	1
21	Hinge Pin - 7 1/4"	21101	2	21101	2
22	Cylinder Pivot Arm	21115	4	21115	4
23	Trunion Cylinder - 2 1/2" (Standard)	21147	4	21147	4
	- 2 1/4" (Optional)	P82-024	2	P82-024	2
24	Boom	P85-002	2	P85-002	2
25	Hinge Pin - 5 1/2"	21498	1	21011	1
	Seal Kits - all 2 1/4" Cylinders	21121	2	21121	2
	- all 2 1/2" Cylinders			P85-001S	
	- all 3" Cylinders			P82-022S	
				P82-027S	

LOADER ASSEMBLY



7520 HYDRAULIC SYSTEM



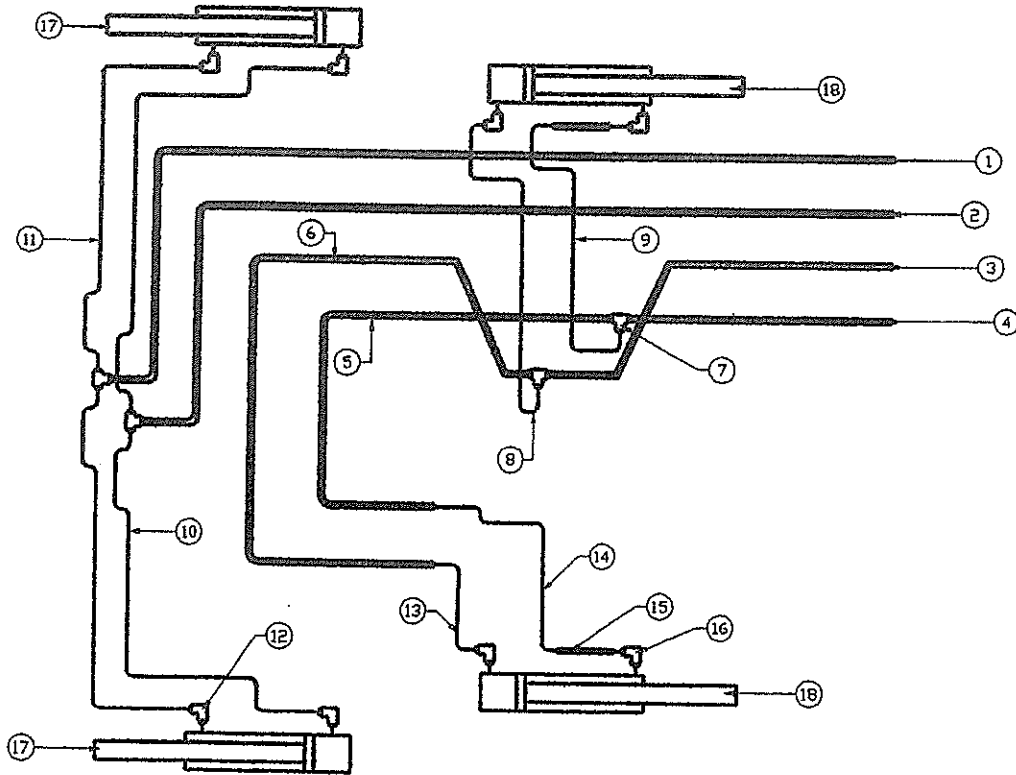
No.	Description	Part No.	Qty
1	1/2" Hyd. Tubing - 1st Line	21366	1
2	1/2" Hyd. Tubing - 2nd Line	21364	1
3	1/2" Hyd. Tubing - 3rd Line	21368	1
4	1/2" Hyd. Tubing - 4th Line	21369	1
5	1/2" Hyd. Tubing - 4th Line	21365	1
6	1/2" Hyd. Tubing - 3rd Line	21367	1
7	Hyd. Tee Fitting	5705x8	4
8	3/8" Hyd. Hose - 20" Long	21418	1
9	3/8" Hyd. Hose - 15" Long	21419	1

No.	Description	Part No.	Qty
10	3/8" Hyd. Hose - 33" Long	21408	2
11	3/8" Hyd. Hose - 42" Long	21407	2
12	90 Deg. Hyd. Elbow	5405x6x6	2
13	3/8" Hyd. Hose - 18" Long	21404	1
14	3/8" Hyd. Hose - 22" Long	21417	1
15	90 Deg. Hyd. Elbow	5405x8	4
16	Bucket Cylinder	P82-024	2
17	Lift Cylinder	P88-001	2

NOTE:

Hydraulic Hoses from Valve to loader, supplied with hydraulic valve.

8520 HYDRAULIC SYSTEM



No.	Description	Part No.	Qty
1	1/2" Hyd. Tubing - 1st Line	21337	1
2	1/2" Hyd. Tubing - 2nd Line	21378	1
3	1/2" Hyd. Tubing - 3rd Line	21371	1
4	1/2" Hyd. Tubing - 4th Line	21370	1
5	1/2" Hyd. Tubing - 4th Line	21396	1
6	1/2" Hyd. Tubing - 3rd Line	21397	1
7	Hyd. Tee Fitting	5705x8	2
8	3/8" Hyd. Hose - 20" Long	21418	1
9	3/8" Hyd. Hose - 15" Long	21419	1

No.	Description	Part No.	Qty
10	3/8" Hyd. Hose - 33" Long	21408	2
11	3/8" Hyd. Hose - 42" Long	5705x8	2
12	90 Deg. Hyd. Elbow	21407	2
13	3/8" Hyd. Hose - 18" Long	5405x6x6	2
14	3/8" Hyd. Hose - 22" Long	5405x6	2
15	90 Deg. Hyd. Elbow	21404	1
16	Bucket Cylinder	21417	1
17	Lift Cylinder	21041	2

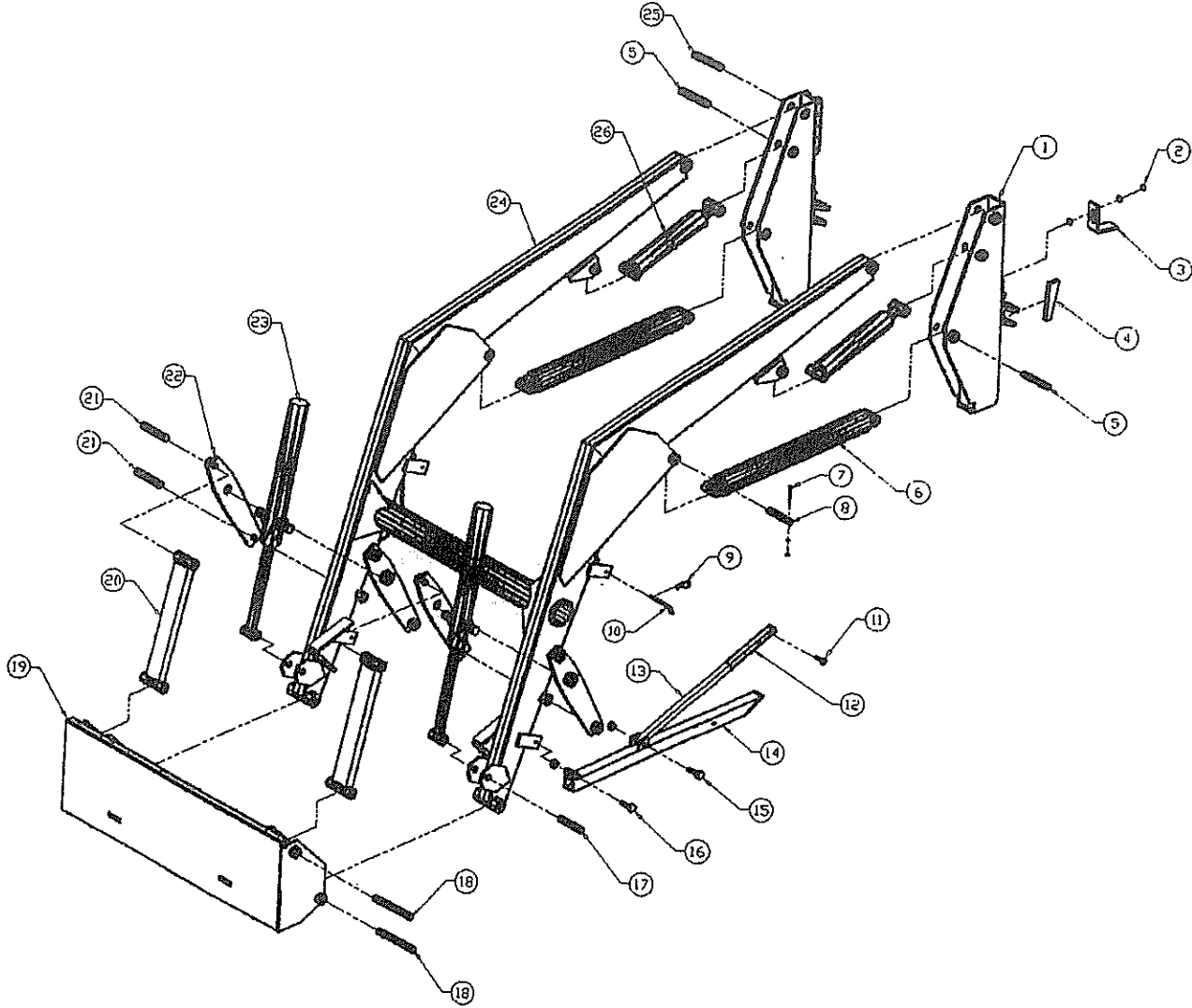
NOTE:

Hydraulic Hoses from Valve to loader, supplied with hydraulic valve.

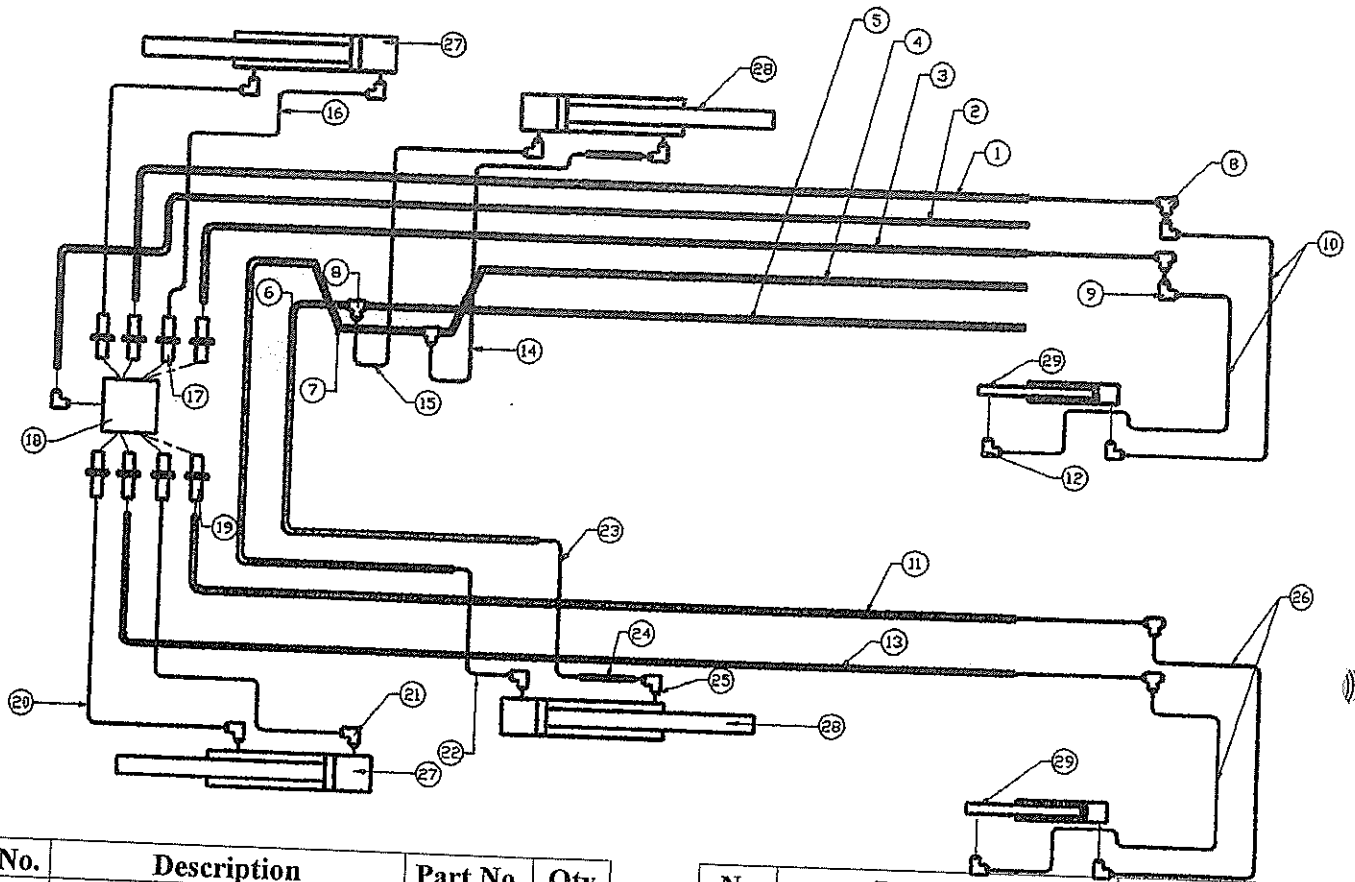
7530/8530

Item No.	Description	Part No. 7530	Qty 7530	Part No. 8530	Qty 8530
1	Post	21358	2	21296	2
2	Lock Nut 1/2" + 2 FW				
3	Lock Bracket	21313	2	21313	2
4	Wedge	21423	2	21423	
5	Hinge Pin - 5 1/2"	21036	6	21036	6
6	Lift Cylinder - 2 1/2" (Standard)	P84-009	2	P84-009	2
	- 2 1/4" (Optional)	P85-001	2	P85-001	2
	- 3" (Optional)	P84-017	2	P84-017	2
7	Hex Bolt - 5/16 x 2 1/2, LW & Nut				24
8	Hinge Pin - 5"	21035	2	21035	2
9	Hair Pin - 3/16				2
10	Clevis Pin	21447	2	21447	2
11	Leg Extension			22090	2
12	Pin			22091	2
13	Upper Leg			21310	2
14	Lower Leg	21445	2	21298	2
15	Hex Bolt - 1/2 x 2 1/2 & Nut				2
16	Hex Bolt - 1/2 x 4 1/2 & Nut				2
17	Hinge Pin - 4 3/4"	21117	2	21117	2
18	Hinge Pin - 7 3/4"	21112	2	21112	4
19	Quicktach Plate	21496	1	21496	1
20	Connecting Arm	21101	2	21101	2
21	Hinge Pin - 7 1/4"	21115	4	21115	4
22	Cylinder Pivot Arm	21147	4	21147	4
23	Trunion Cylinder - 2 1/2" (Standard)	P82-024	2	P82-024	2
	- 2 1/4" (Optional)	P85-002	2	P85-002	2
24	Boom	21450	1	21312	1
25	Hinge Pin - 5 1/2"	21121	2	21121	2
26	Self Levelling Cylinder - 2 1/2" (Standard)	P82-021	2	P82-021	2
	- 2 1/4" (Optional)	P85-003	2	P85-003	2
	Seal Kits - all 2 1/4" Cylinders	P85-001S		P85-001S	
	- all 2 1/2" Cylinders	P82-022S		P82-022S	
	- all 3" Cylinders	P82-027S		P82-027S	

LOADER ASSEMBLY



7530 HYDRAULIC SYSTEM



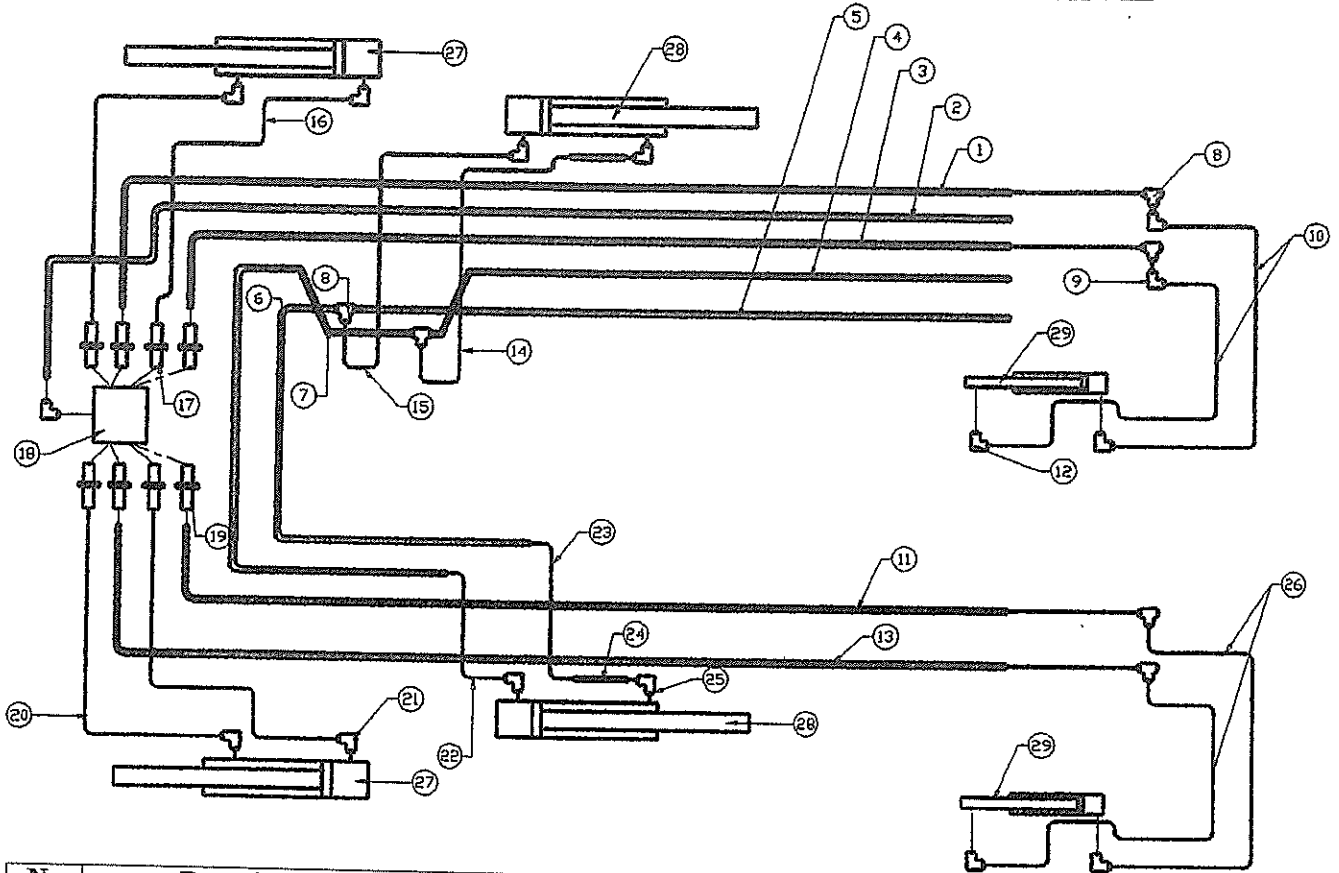
No.	Description	Part No.	Qty
1	1/2" Hyd. Tubing - 1st Line	21361	1
2	1/2" Hyd. Tubing - 2nd Line	21363	1
3	1/2" Hyd. Tubing - 3rd Line	21362	1
4	1/2" Hyd. Tubing - 4th Line	21368	1
5	1/2" Hyd. Tubing - 5th Line	21369	1
6	1/2" Hyd. Tubing - 5th Line	21365	1
7	1/2" Hyd. Tubing - 4th Line	21367	1
8	Hyd. Tee Fitting	5705x8	4
9	90 Deg. Hyd. Elbow	5506x8	2
10	3/8" Hyd. Hose - 20" Long	21411	2
11	1/2" Hyd. Tubing	21360	1
12	90 Deg. Hyd. Elbow	5405x6x6	6
13	1/2" Hyd. Tubing	21359	1
14	3/8" Hyd. Hose - 20" Long	21418	1
15	3/8" Hyd. Hose - 15" Long	21419	1

No.	Description	Part No.	Qty
16	3/8" Hyd. Hose - 33" Long	21408	2
17	Adaptor	5205x8	6
18	Hydraulic Block	21199	1
19	Adaptor	5205x6x6	2
20	3/8" Hyd. Hose - 42" Long	21407	2
21	Elbow	5405x6	2
22	3/8" Hyd. Hose - 18" Long	21404	1
23	3/8" Hyd. Hose - 22" Long	21417	1
24	1/2" Hyd. Tubing - 4th	21041	2
25	90 Deg. Hyd. Elbow	5405x8	4
26	3/8" Hyd. Hose - 42" Long	21410	2
27	Bucket Cylinder	P82-024	2
28	Lift Cylinder	P84-009	2
29	Self Levelling Cylinder	P82-021	2

NOTE: Hydraulic Hoses from Valve to loader, supplied with hydraulic valve.

8530

HYDRAULIC SYSTEM

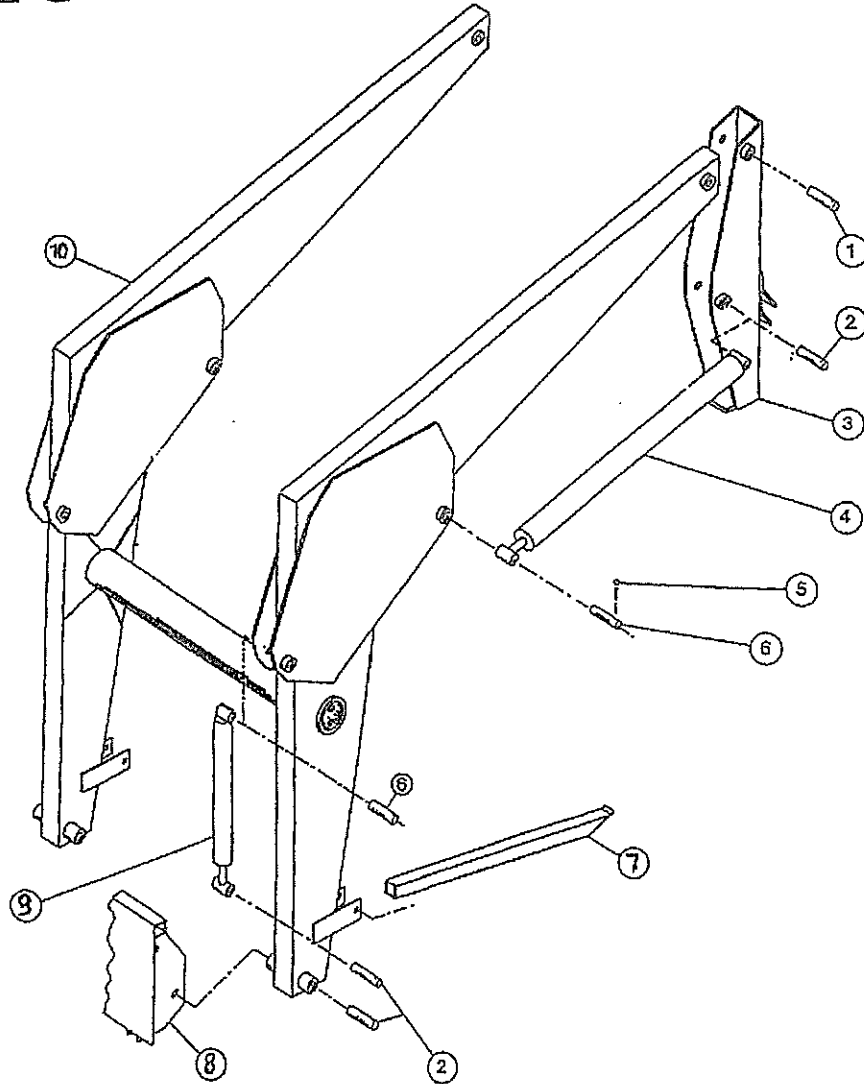


No.	Description	Part No.	Qty
1	1/2" Hyd. Tubing - 1st Line	21375	1
2	1/2" Hyd. Tubing - 2nd	21374	1
3	1/2" Hyd. Tubing - 3rd Line	21376	1
4	1/2" Hyd. Tubing - 4th Line	21371	1
5	1/2" Hyd. Tubing - 5th Line	21370	1
6	1/2" Hyd. Tubing - 5th Line	21396	1
7	1/2" Hyd. Tubing - 4th Line	21397	1
8	Hyd. Tee Fitting	5705x8	4
9	90 Deg. Hyd. Elbow	5506x8	2
10	3/8" Hyd. Hose	21411	2
11	1/2" Hyd. Tubing	21373	1
12	90 Deg. Hyd. Elbow	5405x6x6	6
13	1/2" Hyd. Tubing	21372	1
14	3/8" Hyd. Hose	21418	1
15	3/8" Hyd. Hose	21419	1

No.	Description	Part No.	Qty
16	3/8" Hyd. Hose	21408	2
17	Adaptor	5205x8	6
18	Hydraulic Block	21199	1
19	Adaptor	5205x6x6	2
20	3/8" Hyd. Hose	21407	2
21	Elbow	5405x6	2
22	3/8" Hyd. Hose	21404	1
23	3/8" Hyd. Hose	21417	1
24	1/2" Hyd. Tubing - 4th	21041	2
25	Elbow	5405x8	4
26	3/8" Hyd. Hose	21410	2
27	Bucket Cylinder	P82-024	2
28	Lift Cylinder	P84-009	2
29	Self Levelling Cylinder	P82-021	2

NOTE: Hydraulic Hoses from Valve to loader, supplied with hydraulic valve.

795-10 LOADER ASSEMBLY

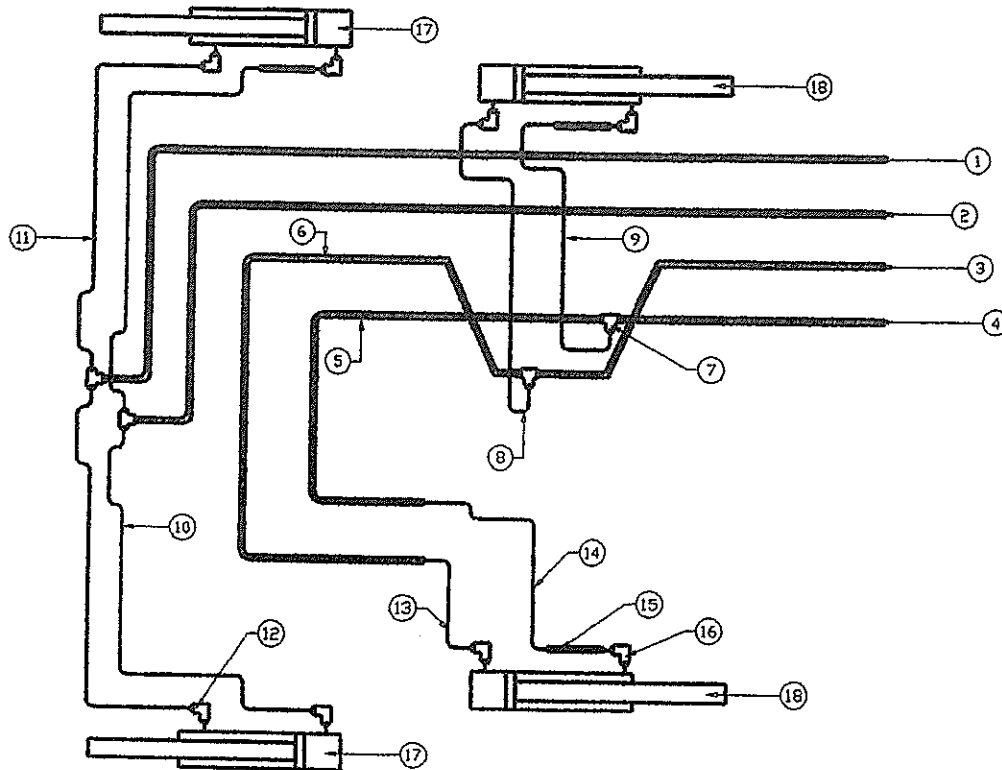


No.	Description	Part No.	Qty
1	Hinge Pin - 5 1/2	21121	2
2	Hinge Pin - 5 1/2	21036	6
3	Post	22112	2
4	Lift Cylinder - 3"	P92-035	2
5	Hex bolt - 5/16 x 2 1/2 & nut	O.L.	8
6	Hinge Pin - 5	21035	4

No.	Description	Part No.	Qty
7	Lower Leg	21445	2
9	Bucket Cyl. - 2 1/2"	P82-022	2
10	Boom	21497	1
---	Seal Kits - all 2	P82-022S	A.R.
	- all 3" cylinders	P85-027S	A.R.

795-10

HYDRAULIC SYSTEM



No.	Description	Part No.	Qty
1	1/2" Hyd. Tubing - 1st Line	21366	1
2	1/2" Hyd. Tubing - 2nd Line	21364	1
3	1/2" Hyd. Tubing - 3rd Line	21368	1
4	1/2" Hyd. Tubing - 4th Line	21369	1
5	1/2" Hyd. Tubing - 4th Line	21365	1
6	1/2" Hyd. Tubing - 3rd Line	21367	1
7	Hyd. Tee Fitting	5705x8	4
8	3/8" Hyd. Hose - 20" Long	21418	1
9	3/8" Hyd. Hose - 15" Long	21419	2

No.	Description	Part No.	Qty
10	3/8" Hyd. Hose - 20" Long	21409	2
11	3/8" Hyd. Hose - 35" Long	21401	2
12	90 Deg. Hyd. Elbow	3409x6	2
13	3/8" Hyd. Hose - 18" Long	21404	1
14	3/8" Hyd. Hose - 22" Long	21417	2
15	1/2" Hyd. Tubing	21041	2
16	90 Deg. Hyd. Elbow	5405x8	2
17	Bucket Cylinder	P82-022	2
18	Lift Cylinder	P92-035	2

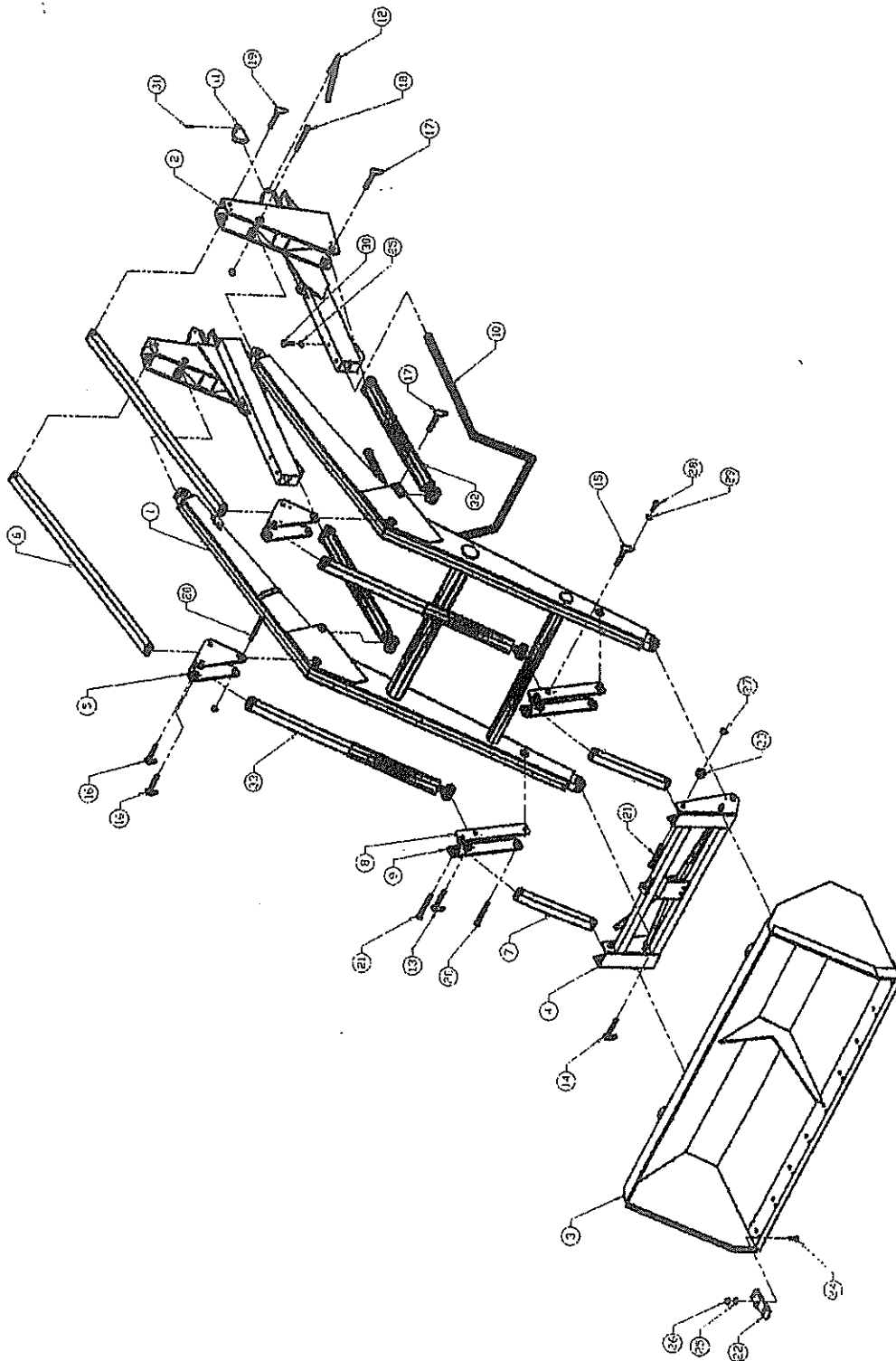
Note:

Hydraulic hoses from valve to loader, supplied with hydraulic valve.

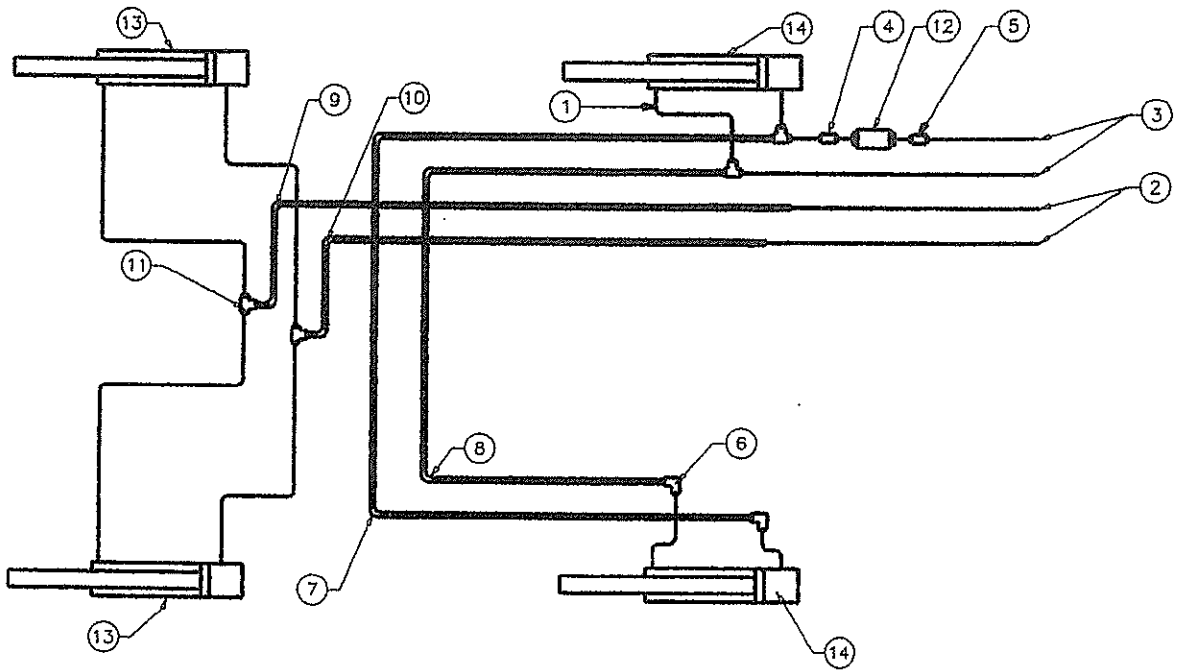
FR360/FR500/FR750

No	Description	Part No. FR360	Qty FR360	Part No. FR500	Qty FR500	Part No. FR750	Qty FR750
1	Mainframe	38131100	1	38241000	1	38290200	1
2	Support Frame (LH & RH)	38131200	1	38262000	1	38290100	1
3	Bucket STD	56100000	1	56200000	1	56300000	1
4	Tool Carrier	38243500	1	38243500	1	35120320	1
5	Pivot Assembly (LH)	38244000	1	38244000	1	38290300	1
5	Pivot Assembly (RH)	38244010	1	38244010	1	38290301	1
6	Parallelogram Arm 11	38107000	2	38107000	2	35120600	2
7	Parallelogram Arm 1	38108000	2	38108000	2	35120700	2
8	Side Lever - Inner	38109000A	2	38109000A	2	(LH) 38290400	1
8	Side Lever - Inner	-----		-----		(RH) 38290403	1
9	Side Lever - Outer	38109000B	2	38109000B	2	(LH) 38290500	1
9	Side Lever - Outer	-----		-----		(RH) 38290501	1
10	Protective Stand	22143	1	22143	1	22143	1
11	Wedge	38125201	2	38125201	2	38125201	2
12	Handle	38125001	2	38125001	2	38125001	2
13	Pin for Bracket Indicator	38102212	1	38102212	1	22214	1
14	Pin	38250000	2	38250000	2	35121600	2
15	Pin	38102211	1	38102211	1	22216	
16	Pin	38115000	4	38115000	4	50508000	4
17	Pin	50510000	4	50508000	4	38290010	4
18	Pin	38116000	2	38240002	2	35120001	2
19	Pin	38100003	2	38100003	2	50508000	2
20	Pin	38100002	4	38100002	4	22215	4
21	Pin	38100001	4	38100001	4	38100001	4
22	Bucket Tooth	56450010	9	56450010	9	56450010	9
23	Bushing	38240005	2	38240005	2	38240005	2
24	Plow Bolt 5/8 x 2	----	18	----	18	----	18
25	Lockwasher 5/8	----	22	----	22	----	22
26	Hex Nut 5/8	----	18	----	18	----	18
27	Lock Nut 7/8	----	10	----	10	----	10
28	Hex Bolt 5/16 x 1	----	14	----	14	----	14
29	Lockwasher 5/16	----	14	----	14	----	14
30	Hex Bolt 5/8 x 3 1/2	----	4	----	4	----	4
31	Spring Pin 5/16 x 1 3/4	----	2	----	2	----	2
32	Lift Cylinder	P92-014	2	P92-021	2	P97-121	2
33	Bucket Cylinder	P92-024	2	P92-025	2	P97-120	2

LOADER ASSEMBLY



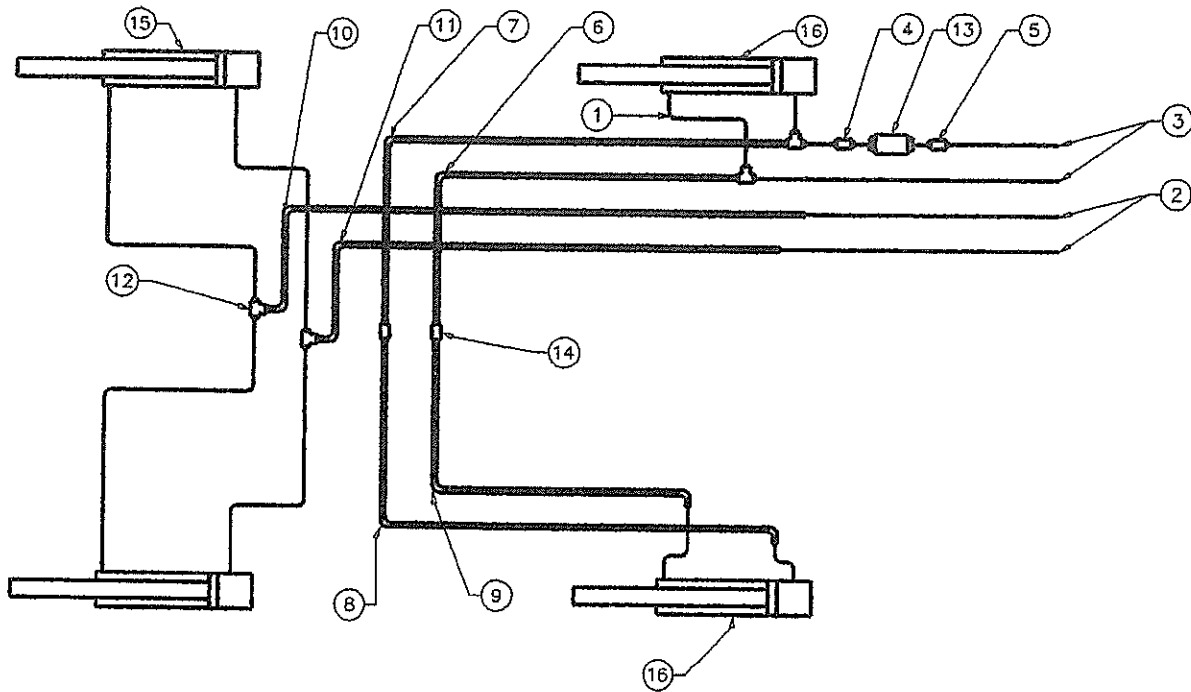
FR360 HYDRAULIC ASSEMBLY



No	Description	Part No.	Qty
1	1/4" Hyd. Hose 28" Long	21975	8
2	1/4" Hyd. Hose 85" Long	22149	2
3	1/4" Hyd. Hose 41" Long	21962	2
4	Hydraulic Fitting	5205x8x8	1
5	37 Female Swivel - 1/2"	9100x8x8	1
6	90 Deg. Hyd. Elbow	5505x8	2
7	3/8" Hyd. Tubing (Lifts)	22152	1

No	Description	Part No.	Qty
8	3/8" Hyd. Tubing (Lifts)	22151	1
9	3/8" Hyd. Tubing	22154	1
10	3/8" Hyd. Tubing	22153	1
11	Hyd. Tee Fitting	5705x8	4
12	1/2" Ball Valve	BV73-100	1
13	Bucket Cylinder	P92-024	2
14	Lift Cylinder	P92-014	2

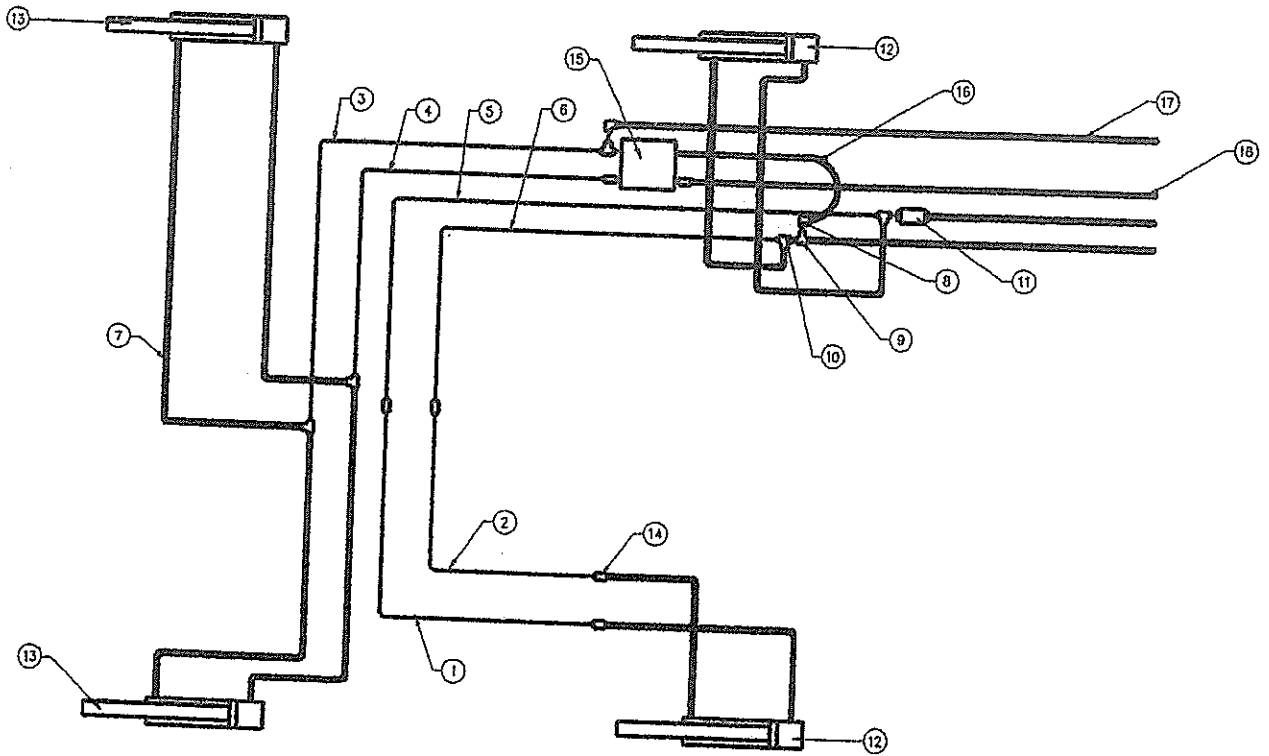
FR500 HYDRAULIC ASSEMBLY



No	Description	Part No.	Qty
1	1/4" Hyd. Hose 28" Long	21975	8
2	1/4" Hyd. Hose 85" Long	22149	2
3	1/4" Hyd. Hose 41" Long	21962	2
4	Hydraulic Union	5205x8x8	1
5	37 Female Swivel - 1/2"	9100x8x8	1
6	3/8" Hyd. Tubing (Lifts)	22141A	1
7	3/8" Hyd. Tubing (Lifts)	22139A	1
8	3/8" Hyd. Tubing (Lifts)	22141B	1

No	Description	Part No.	Qty
9	3/8" Hyd. Tubing (Lifts)	22139B	1
10	3/8" Hyd. Tubing	22138	1
11	3/8" Hyd. Tubing	22140	1
12	Hyd. Tee JIC Fitting	5705x8	4
13	1/2" Ball Valve	BV73-100	1
14	Hyd. Union	5305x8	2
15	Bucket Cylinder	P92-025	2
16	Lift Cylinder	P92-021	2

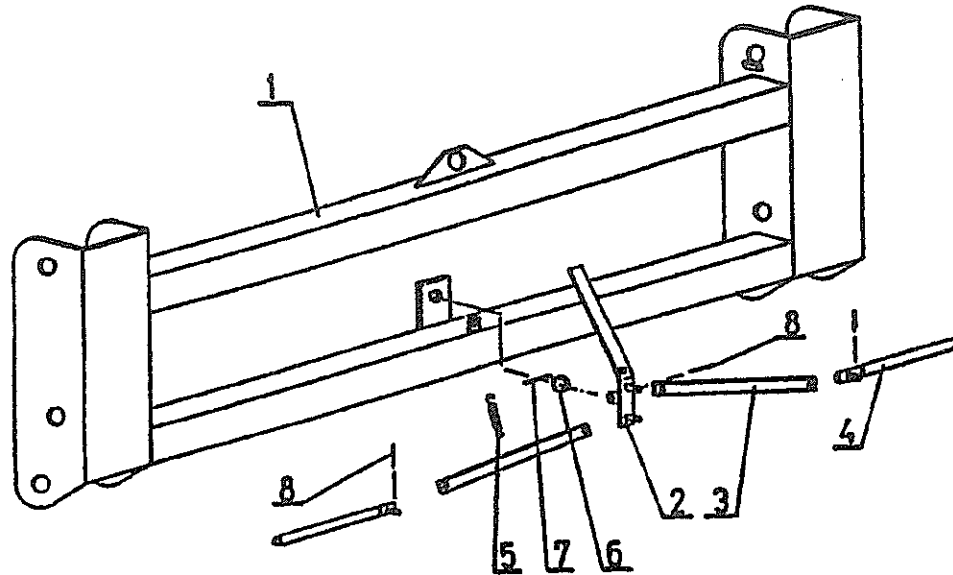
FR750 HYDRAULIC ASSEMBLY



No	Description	Part No.	Qty
1	1/2" Hyd. Tubing	22206	1
2	1/2" Hyd. Tubing	22211	1
3	1/2" Hyd. Tubing	22207	1
4	1/2" Hyd. Tubing	22208	1
5	1/2" Hyd. Tubing	22210	1
5	1/2" Hyd. Tubing	22209	1
7	3/8" Hyd. Hose - 30" Long	21975	8
3	90 Deg. Hyd. Elbow	5506x8	2
2	Tee Fitting	6602-8	2

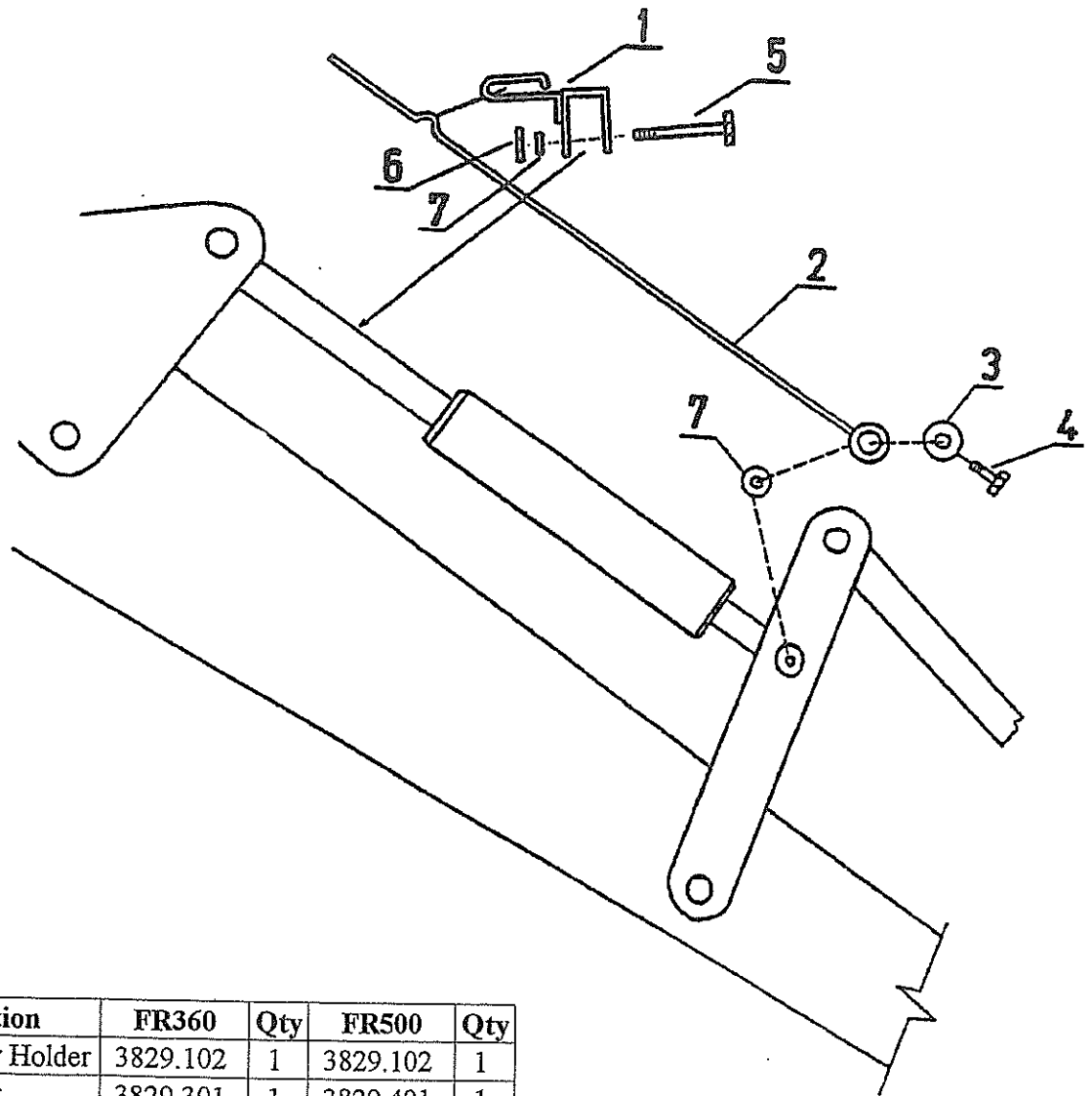
No	Description	Part No.	Qty
10	Hyd. Tee Fitting	5705x8	4
11	1/2" Ball Valve	BV73-100	1
12	Lift Cylinder	P97-121	2
13	Bucket Cylinder	P97-120	2
14	Male Union Fitting	5305x8	6
15	Relief Block	TH08B018	1
16	3/8" Hyd. Hose - 15" Long	21419	1
17	3/8" Hyd. Hose - 85" Long	22149	2
18	3/8" Hyd. Hose - 50" Long	22218	2

LOADER TOOL CARRIER REPLACEMENT PARTS



No.	Description	FR360	Qty	FR500	Qty
1	Tool Carrier	3512.601	1	3512.601	1
2	Lever	3512.6001	1	3512.6001	1
3	Lever	3512.6005	2	3512.6005	2
4	Bolt	3512.6009	2	3512.6009	2
5	Spring	1060.0003	1	1060.0003	1
6	Washer	672	1	672	1
7	Pin	2454	1	2454	1
8	Safety Pin	2408	4	2408	4

LOADER BUCKET INDICATOR REPLACEMENT PARTS

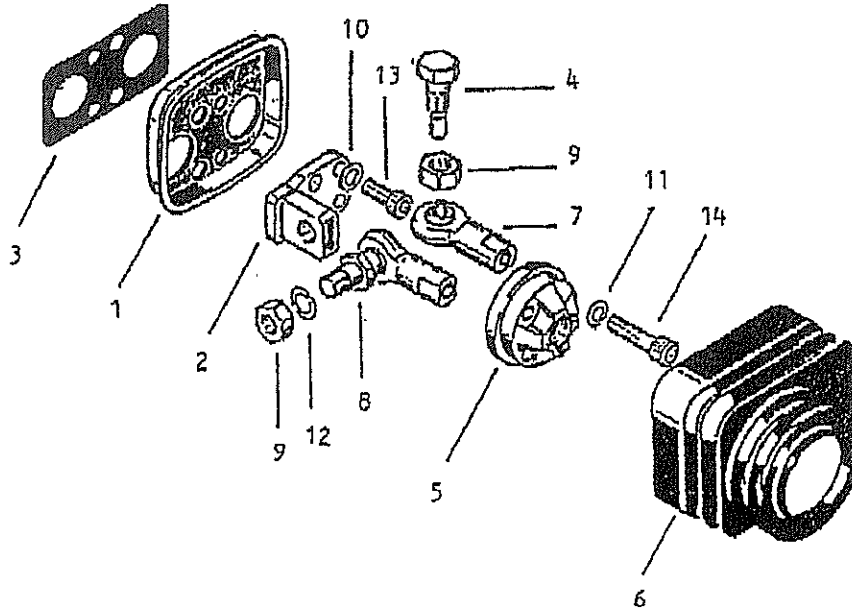


No.	Description	FR360	Qty	FR500	Qty
1	Indicator Holder	3829.102	1	3829.102	1
2	Indicator	3829.301	1	3829.401	1
3	Fender Washer	5/16x1 1/2	1	5/16x1 1/2	1
4	Bolt	395	1	395	1
5	Bolt	299	1	299	1
6	Nut	624	1	624	1
7	Washer	702	2	702	2
8	Pin	3829.103	1	3829.103	1

VALVE
ILLUSTRATIONS
&
PARTS
GUIDE

SD5 VALVE

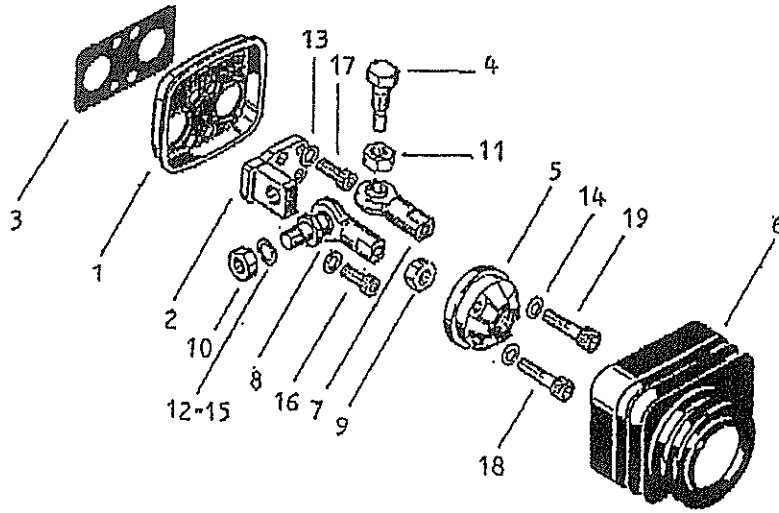
LCB 5 - 5CL0205000



Item No.	Part No.	Description	Alternate #	Qty.
1	3FLA125100	Flange		1
2	3FUL220000	Fulcrum		1
3	3GUA167050	Seal		1
4	3PER513340	Pin	21869	1
5	3POR340240	Articulation roller	21870	1
6	3SOF200590	Rubber bellow	21868	1
7	4ART006000	Tuthill	21867	1
8	4ART106000	Connecting rod	21866	2
9	4DAD208125	M8 nut		3
10	4ROS305312	5,3x8,9x1,2 washer		4
11	4ROS606407	6,4x13x0,8 washer		3
12	4ROS608408	8,4x13x0,8 washer		2
13	4VIT605014	Screw M5x14		4
14	4VIT606025	Screw M6x25		3

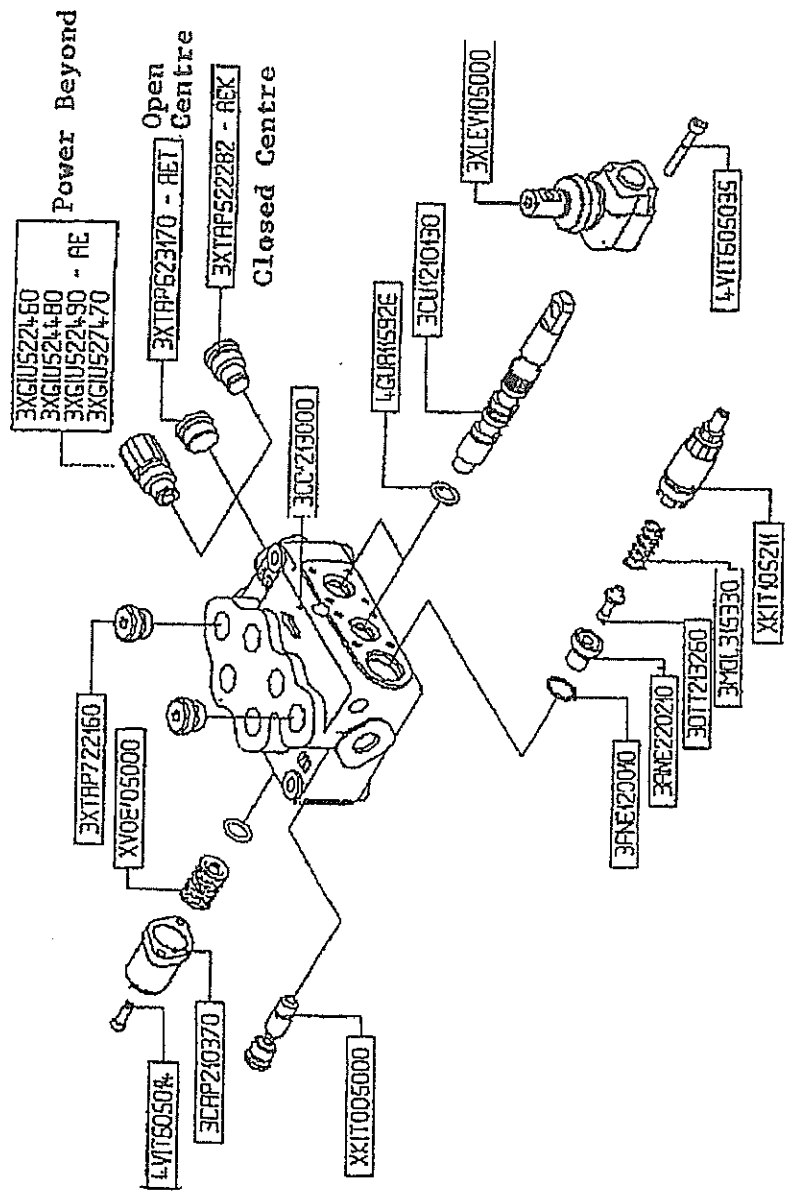
SD11 VALVE

LCB 11 - 5CL0211100

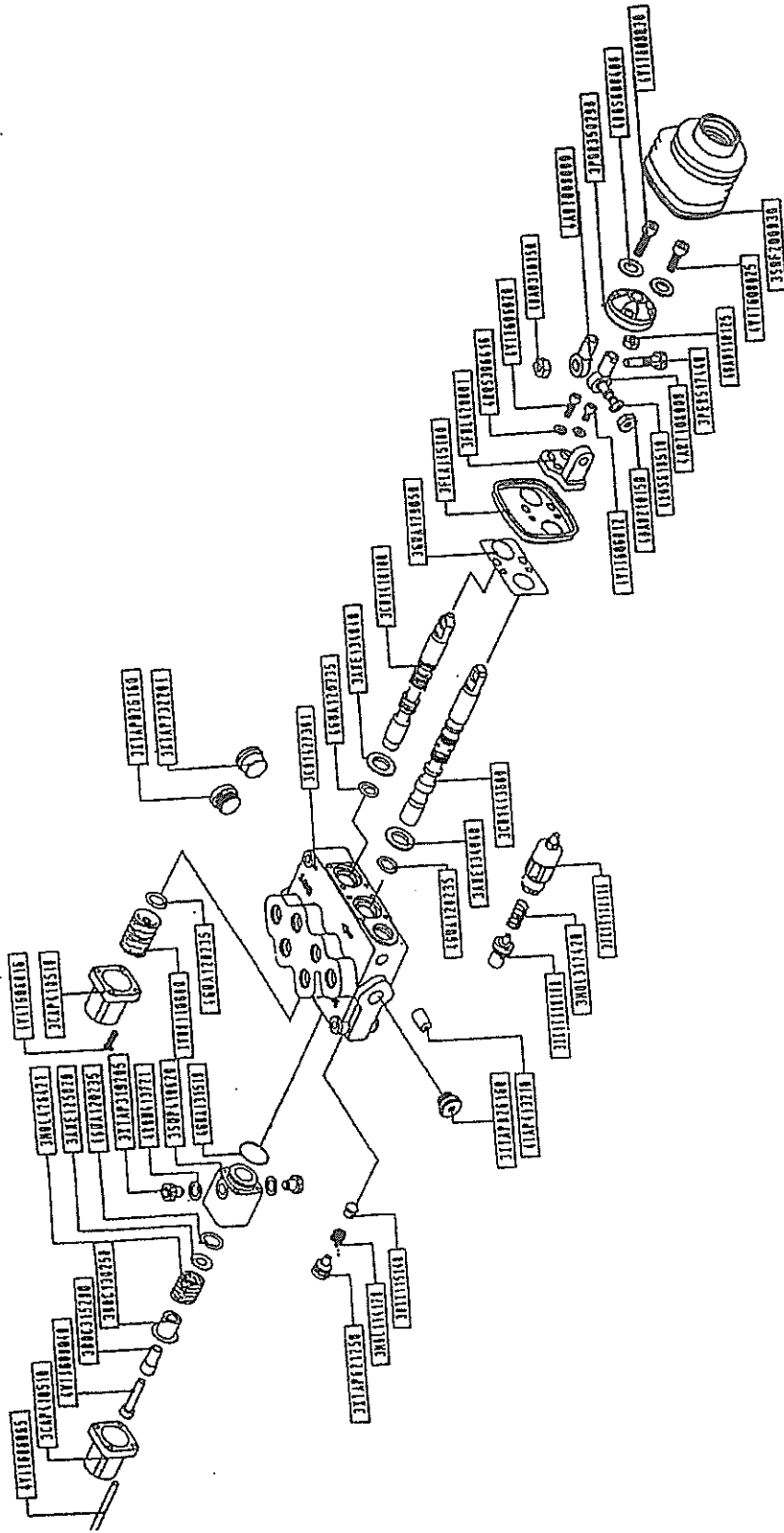


No.	Part No.	Description	Qty
1	3FLA145100	Flange	1
2	3FUL420001	Fulcrum	1
3	4GUA179050	Seal	1
4	3PER517440	Pin	1
5	3POR350290	M12 articulation roller	1
6	3SOF200830	Bellows	1
7	4ART008000	Tuthill	1
8	4ART108000	Connecting rod	2
9	4DAD118125	M8 nut	1
10	4DAD210150	M10 nut	2

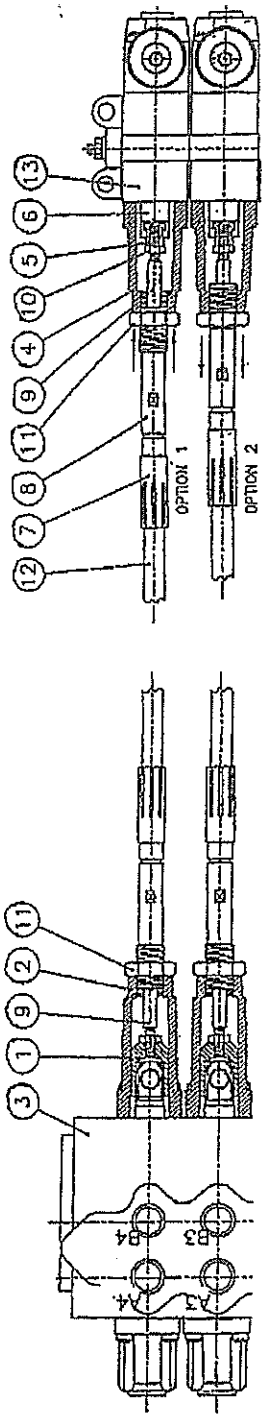
No.	Part No.	Description	Qty
11	4DAD310150	M10 nut	1
12	4ROS110420	10,4x21 washer	2
13	4ROS306410	Washer	4
14	4ROS608408	8,4x13x0,8	4
15	4ROS610510	10,5x16x1 washer	2
16	4VIT606012	M6x12 screw	2
17	4VIT606020	M6x20 screw	2
18	4VIT608025	M8x25 screw	1
19	4VIT608030	M8x30 screw	3



SD5 HYDRAULIC CONTROL VALVE UP TO 15 GPM



**SD11 HYDRAULIC CONTROL VALVE
15 GPM TO 22 GPM**

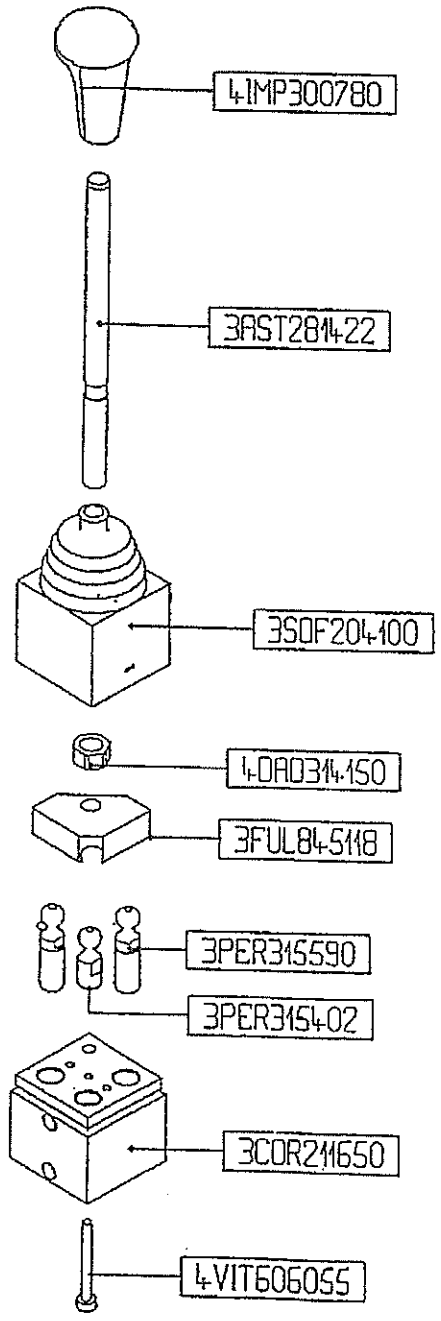


SD5 - PART # VAL 22045
 SD11 - PART # VAL 22044

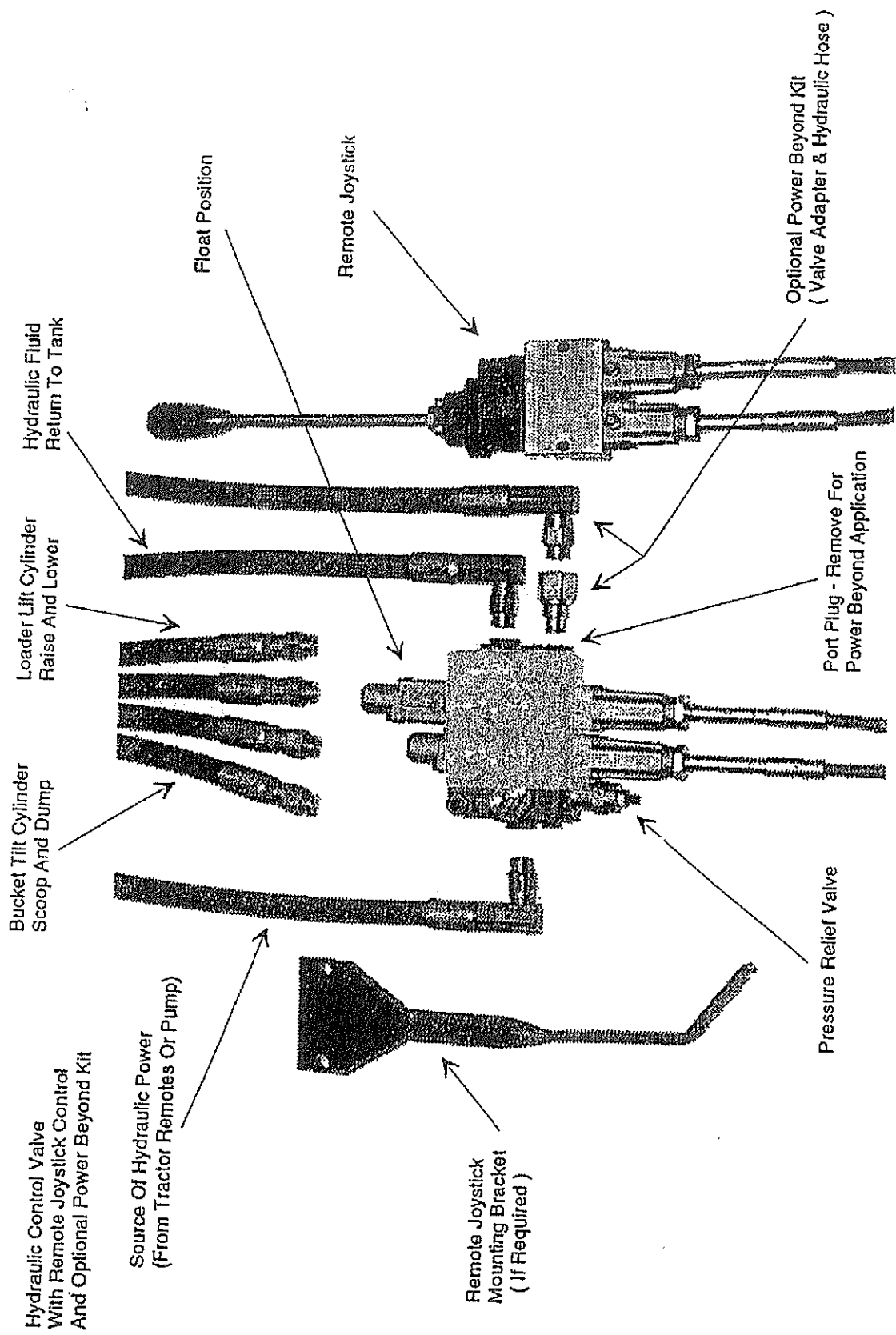
④ CONNECTOR KIT

⑫ 1.5 m CABLE - PART # VAL 22048

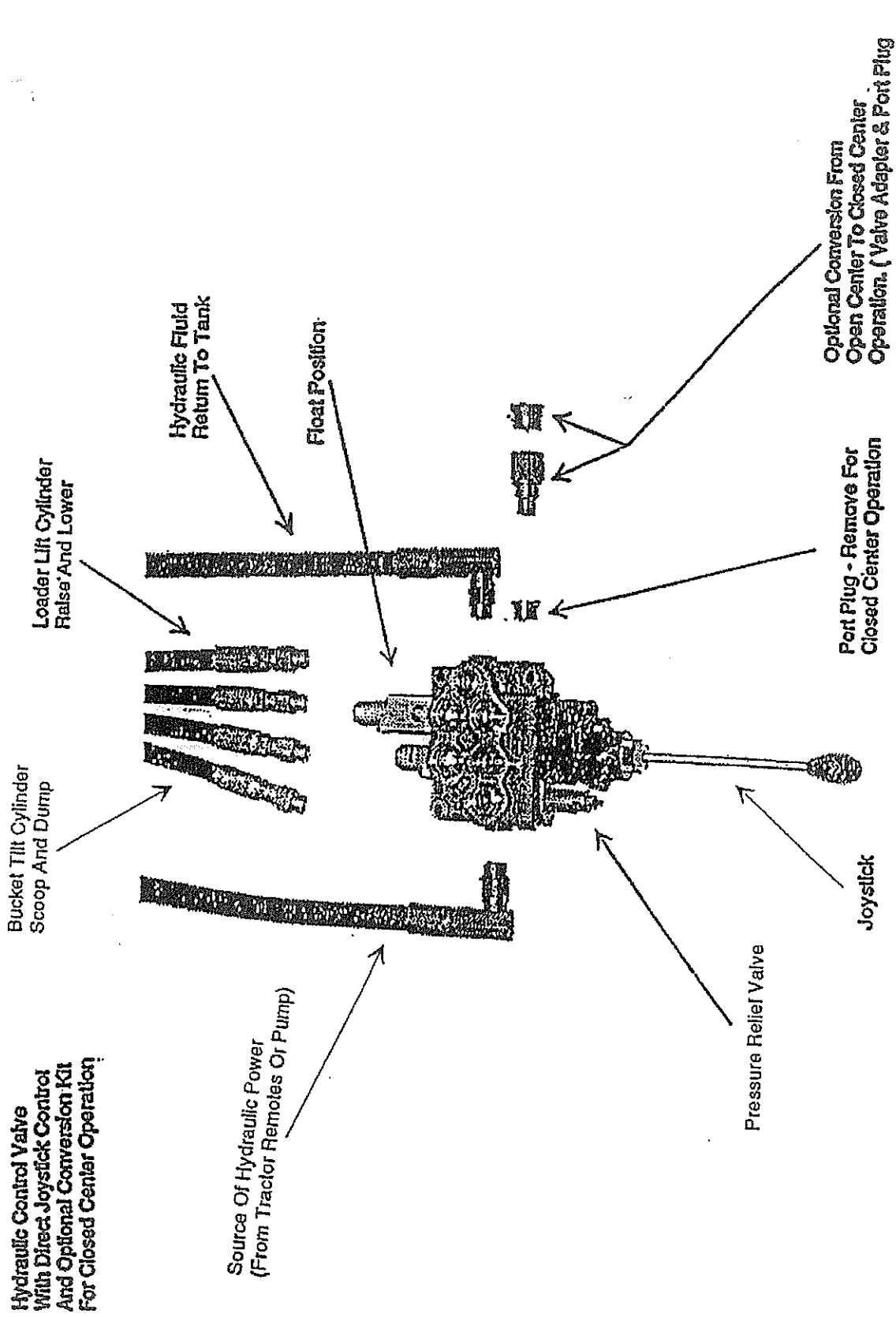
DUAL REMOTE ACTUATOR



PART NO. VAL 22047

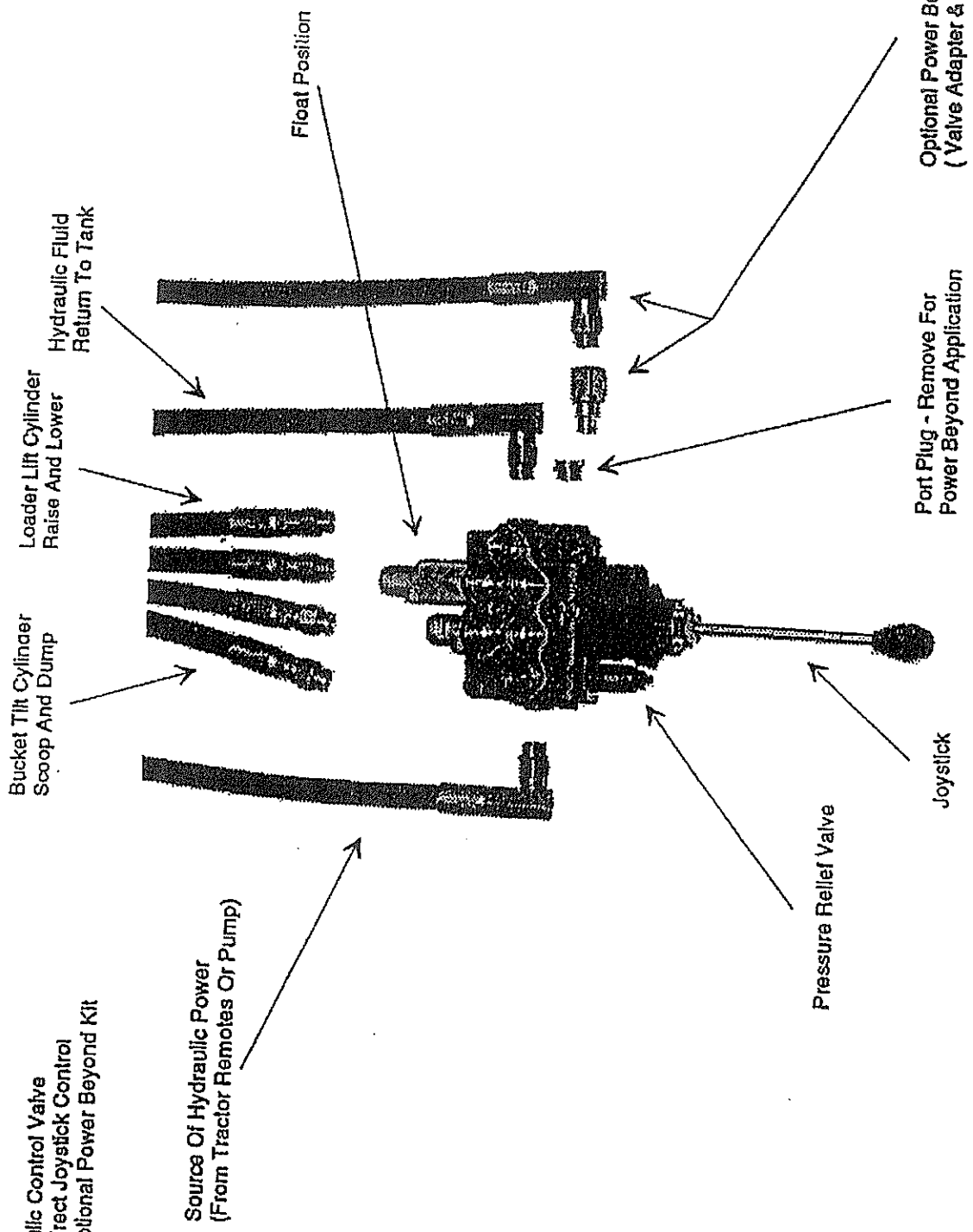


WARNING: Your New Valve Has a Float Position Identified by the Longer Spring Mechanism Opposite the Joystick Cable Connections. (See Illustration) Your Loader Lift Cylinder Hoses Must be Installed Such That When You Push the Joystick Forward, The Loader Goes into its Down Cycle. The Float Position is Activated When The Joystick is Pushed Fully Forward. DO NOT Install The Hoses Where The Lift Cycle is Activated by Pushing the Joystick Forward !



WARNING: Your New Valve Has a Float Position Identified by the Longer Spring Mechanism Opposite the Joystick Cable Connections. (See Illustration) Your Loader Lift Cylinder Hoses Must be Installed Such That When You Push the Joystick Forward, The Loader Goes into its Down Cycle. The Float Position is Activated When The Joystick is Pushed Fully Forward. DO NOT! Install The Hoses Where The Lift Cycle is Activated by Pushing the Joystick Forward !

**Hydraulic Control Valve
With Direct Joystick Control
And Optional Power Beyond Kit**



WARNING: Your New Valve has a Float Position identified by the Longer Spring Mechanism Opposite the Joystick. (See Illustration) Your Loader Lift Cylinder Hoses Must be Installed Such That When You Push The Joystick Forward, The Loader Goes into its Down Cycle. The Float Position is Activated When the Joystick is Pushed Fully Forward. DO NOT Install The Hoses Where the Lift Cycle is Activated by Pushing the Joystick Forward !

NOTICE

INSTALLATION OF HYDRAULIC VALVE

When installing the hydraulic control valve on the front end loader, it is very important that the operator does not reverse the flow of the oil through the valve. The control valve has backpressure ratings of (1100 p.s.i.), however, if the flow of oil is accidentally reversed, the valve will receive full tractor pressure which will exceed 2000 p.s.i. If the valve receives more than the rated 1100 p.s.i. backpressure, the seals and gaskets will be damaged and excessive leakage will occur.

When installing the control valve, it is recommended connecting the return line directly back to sump on the tractor which will ensure the oil cannot change direction through the valve. If this is not possible the operator must be aware that he cannot change oil flow through the valve.

HYDRAULIC VALVE INSTALLATION

To prevent back pressure in hydraulic control valve the following steps should be taken:

1. OPEN CENTRE VALVE

When installing this valve the pressure line should be connected to the remote valves on the tractor. The return port on the valve should be installed directly into the tractor transmission or sump. When installing in this manner, the risk of creating excessive back pressure is eliminated.

2. POWER BEYOND VALVE

The power beyond valve is recommended on all tractors. When using this valve the hydraulic lines from the loader valve will be connected directly into hydraulic lines on the tractor. The pressure line on the loader valve should be connected to the pressure line on the tractor hydraulic pump. The power beyond port on the valve, the line should be connected to the return side of the pressure line on the pump of the tractor. The return line on the valve should be connected to the reservoir on the tractor. (Refer to the hydraulic schematic).

NOTE: Warranty is void on all valves that are damaged due to backpressure.